

TRANSGRESSIVE CHRISTIAN ICONOGRAPHY IN POST-APARTHEID

SOUTH AFRICAN ART

VOLUME II

ILLUSTRATIONS

Submitted in fulfilment of the
requirements for the degree of

DOCTOR OF PHILOSOPHY

at

RHODES UNIVERSITY

by

E LAINE

KAREN VON VEH

^

September 2011



Fig.0.1: Max Ernst. *The Virgin Mary Spanking the Christ Child before Three Witnesses: Andre Breton, Paul Eluard, and the Painter.* 1926. Oil on canvas, 196 x 130 cm. Museum Ludwig, Cologne, Germany.



Fig.0.2: *Justinian, Bishop Maximianus, and attendants.* c.547. Mosaic on the north wall of the apse, San Vitale, Ravenna, Italy.



Fig.0.3: *Christ handing the crown to Justinian, seated between two angels, Saint Vitalis and Bishop Ecclesius.* c.547. Mosaic in the apse of San Vitale, Ravenna, Italy.



Fig.1.1: Andres Serrano. *Piss Christ*. 1987. Cibachrome photograph mounted on plexiglass, 152 x 101 cm.



Fig.1.2: Chris Ofili. *The Holy Virgin Mary*. 1996. Acrylic, oil, resin, paper collage, glitter, map pins and elephant dung on canvas, 244 x 183 cm.



Fig.1.3: Angus Fairhurst. *Pietà*. 1996. C-print in frame, 261.6 x 195.6 cm. Sadie Coles HQ, London.



Fig.1.4: Sarah Lucas. *Christ You Know it Ain't Easy* (detail). 2003. Marlboro light cigarettes and paint, dimensions variable. Sadie Coles HQ, London.

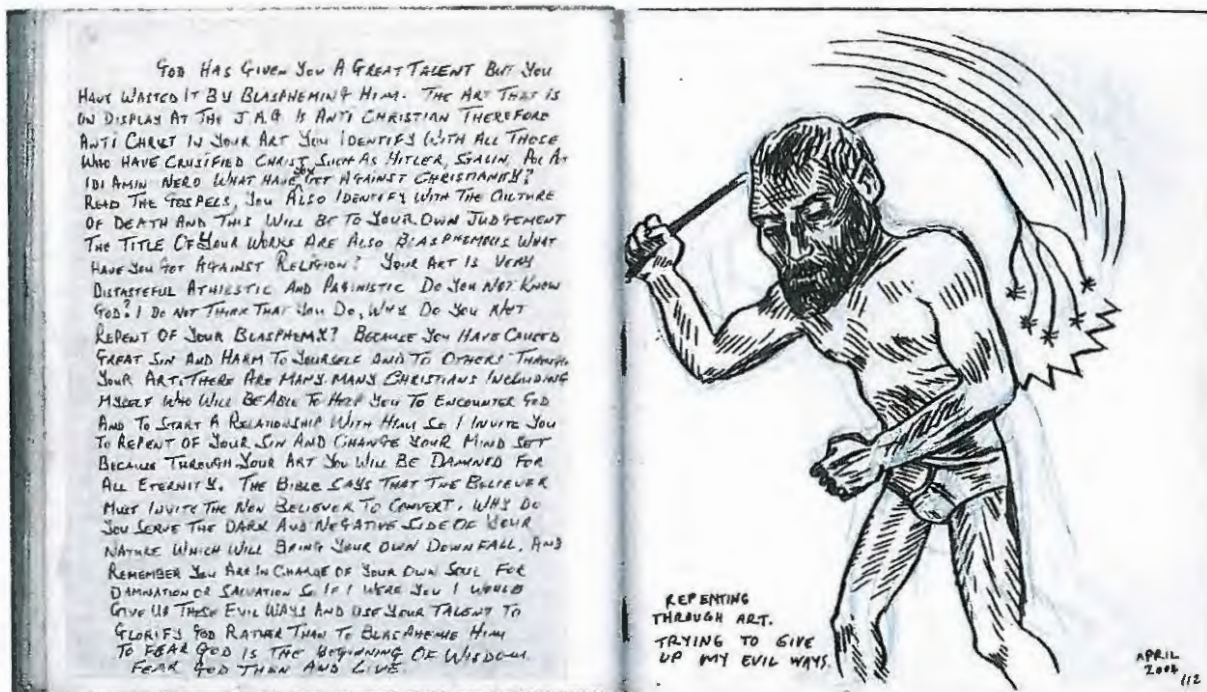


Fig.1.5: Conrad Botes. Page from: *Dukuza drawing book no.4*. 2004.



Fig.1.6: *Madonna and Child (Whakapakoko)*. 1845-90. Wood, Paua shell, 83 x 15 cm. Auckland Museum.



Fig.2.1: Azaria Mbatha. *David and Goliath*. 1963. Linocut on paper, 25 x 30 cm.



Fig.2.2: Azaria Mbatha. *Herod and the Wise Men*. 1965. Linocut on paper, 29.2 x 23.1 cm.
Collection Mr P. C. G. McKenzie, Pietermaritzburg.



Fig.2.3: Charles Nkosi. *Pain on the Cross I*. 1976. Linocut, 337 x 223 cm.



Fig.2.4: Charles Nkosi. *Pain on the Cross IV*. 1976. Linocut, 337 x 223 cm.



Fig.2.5: Charles Nkosi. *Crucifixion II, Pain of the Cross II*. 1976. Linocut, 34 x 23 cm. (L)

Fig.2.6: Charles Nkosi. *Crucifixion III, Submission to Death*. 1976. Linocut, 33 x 23 cm. (R)

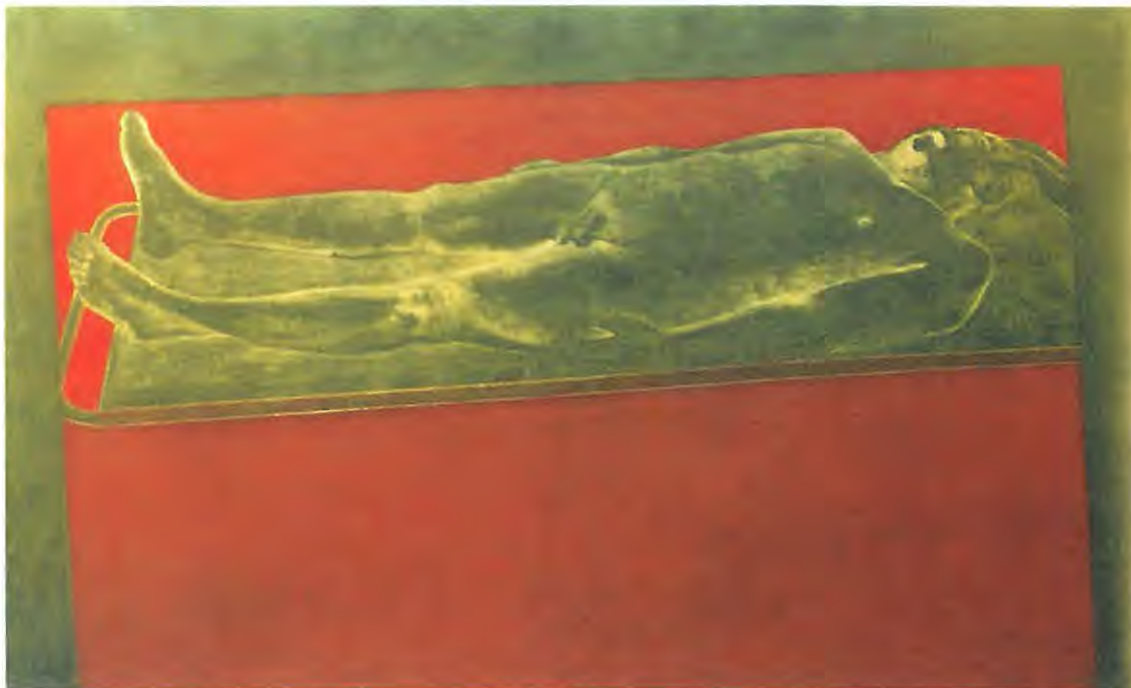


Fig.2.7: Paul Stopforth. *Elegy*. 1981. Mixed media on paper on wood panel, 152.4 x 243.84 cm. MTN Collection.



Fig.2.8: Hans Holbein. *The Body of the Dead Christ in the Tomb*. 1521. Oil on wood, 30.5 x 200 cm. Offentliche Kunstsammlung, Basel, Switzerland.



Fig.2.9: Andrea Mantegna. *Foreshortened Christ*. c.1500. Tempera on canvas, 68 x 81 cm. Pinacoteca di Brera, Milan.



Fig.2.10: Paul Stopforth. *Biko Series: Heels (negative)*. 1980. Graphite and wax on paper, 76 x 56 cm. Collection of the University of the Witwatersrand.



Fig.2.11: Samkelo Bunu. *Daniel in the Lion's Den*. 1995. Etching, 29 x 29.5 cm. MTN Collection.



Fig.2.12: Paul Stopforth. *The Island #3: Hinge*. 2003. Mixed media on paper, 58.5 x 56 cm. Private collection.



Fig.2.13: Paul Stopforth. *The Island #1: Trash Cans*. 2003. Mixed media on paper, 58.5 x 56 cm. Collection of the artist.



Fig.2.14: Paul Stopforth. *The Island #4: Blankets*. 2003. Mixed media on paper, 58.5 x 58 cm. Collection of the artist.

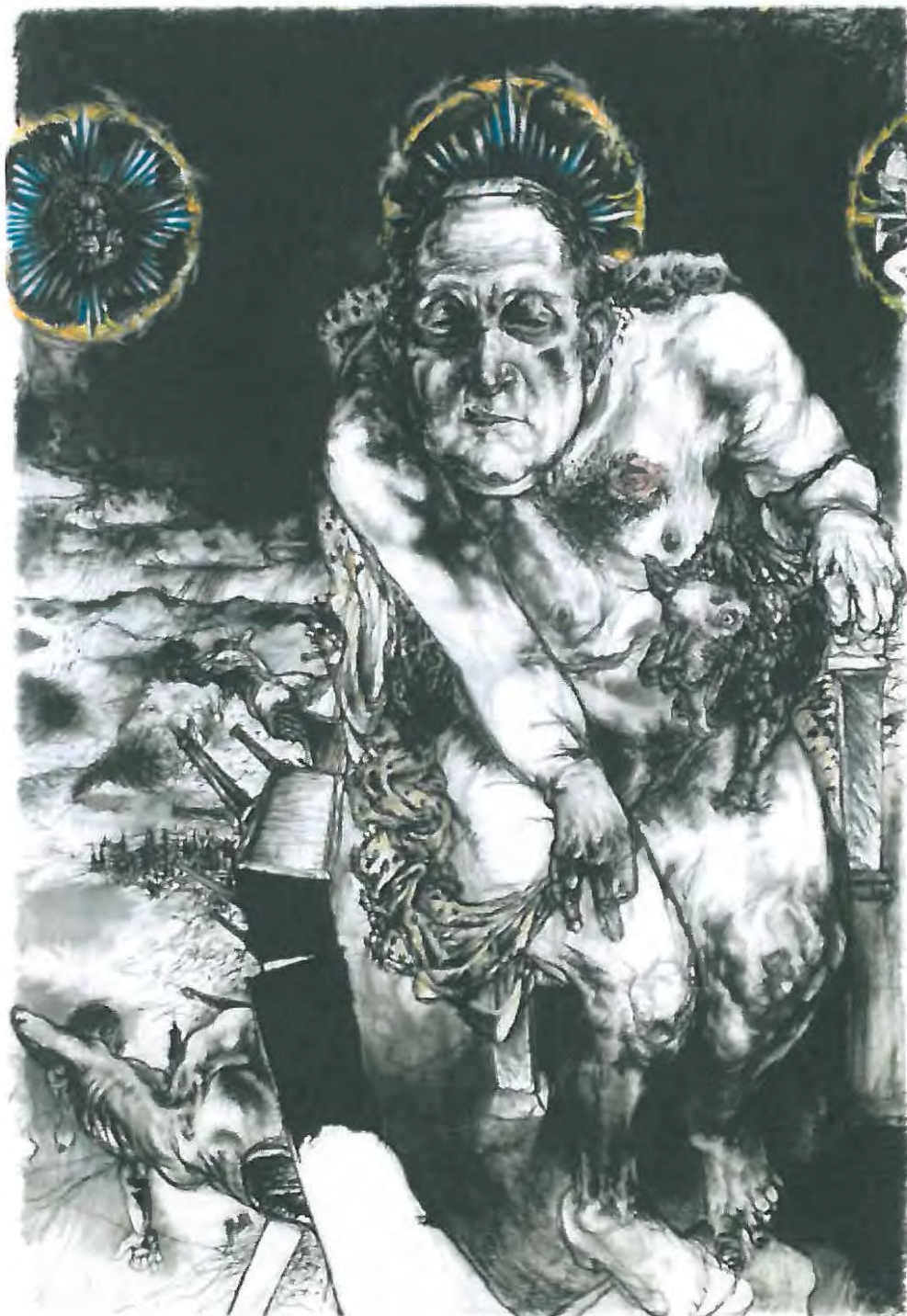


Fig.2.15: Diane Victor. *The Problem with being a God These Days*. 1987. Charcoal and pastel on paper, 150 x 100 cm. ABSA Collection.



Fig.2.16: Diane Victor. *Adoration of St. Eugene*. 1988. Etching and aquatint, 70 x 40 cm.



Fig.2.17: Diane Victor. *He'll Steal More than Your Heart*. 1988. Charcoal and pastel on paper, 150 x 80 cm.



Fig.2.18: Diane Victor. *The Ultimate Adoration*. 1989. Charcoal and pastel on paper, 150 x 80 cm.



Fig.2.19: Attributed to Leonhard Kern. *Corpus Christi*. c.1625-40. Bronze, 19.6 x 19.2 x 3.8 cm. Michael Hall Collection.



Fig.2.20: Georg Petel. *Crucifix*. c.1630-34. Ivory corpus mounted on ebonized wooden cross with original ivory banner cartouche, 31.3 x 23.3 x 7 cm. Michael Hall Collection.



Fig.2.21: Christine Dixie. *Still the gilt frame holds*. 1991. Two-plate copper etching, soft-ground etching, hard-ground etching, chine collé and aquatint, 595 x 405 cm.



Fig.2.22: Christine Dixie. *Bathsheba: looking on from a secret space*. 1992. Four-plate copper etching, soft-ground etching, hard-ground etching and aquatint, 300 x 405 cm.



Fig.2.23: Christine Dixie. *Potiphar's wife: pursuing his mirage*. 1992. Four-plate copper etching, soft-ground etching, soft-ground impression, hard-ground etching, mezzotint and aquatint, 300 x 405 cm.



Fig.2.24: Christine Dixie. *Ricci's 'Bathsheba bathing': as though the present was a spectator.* 1993. Four-plate copper etching, soft-ground etching, hard-ground etching, mezzotint and aquatint, 595 x 447 cm.



Fig.2.25: Sebastiano Ricci. *Bathsheba at the Bath*. 1725. Oil on canvas, 118.5 x 199 cm. Szépművészeti Múzeum, Budapest.



Fig.3.1: Hieronymus Bosch. *Garden of Earthly Delights*. 1505-1510. Oil on wood, 220 x 389 cm. Museo del Prado, Madrid.



Fig.3.2: Michelangelo Buonarroti. *The Garden of Eden*. 1508-1512. Middle fresco cycle of ceiling, before restoration, 280 x 270 cm, Sistine Chapel, Vatican City.



Fig.3.3: Francesco del Cossa. *St. Lucy* (detail). 1473. Oil on panel, 79 x 56 cm. Samuel H. Kress Collection, National Gallery of Art, Washington.



Fig.3.4: Sebastiano Del Piombo. *Martyrdom of St Agatha*. 1520. Oil on wood, 127 x 178 cm. Galleria Palatina (Palazzo Pitti), Florence.



Fig.3.5: Diane Victor. *Strip*. 1999. Charcoal and pastel on paper, 100 x 80 cm. BHP Billiton Collection.



Fig.3.6: Diane Victor. *Teased*. 1999. Charcoal and pastel on paper, 100 x 80 cm. Collection of the artist.



Fig.3.7: Friedrich Overbeck. *The Assumption of the Blessed Virgin Mary*. 1855. Oil on board, dimensions unavailable. Cologne Cathedral. (L)

Fig.3.8: Attributed to the Master of Pedret. *Apse and The Virgin and Child in Majesty, with Archangels and the Magi*. c.1100. Fresco from the Church of San Martin, Fuentidueña, Spain. (R)



Fig.3.9: Majak Bredell. *Sacred Marriage I*. 1997. Mixed media on paper, 128 x 112 cm.



Fig.3.10: Majak Bredell. *Sacred Marriage II*. 1997. Mixed media on paper, 128 x 112 cm.



Fig.3.11: Majak Bredell. *Adam – Tree of Life*. 2009. Oil on shaped masonite, 120 x 180 cm.



Fig.3.12: Majak Bredell. *Eve – Tree of Life*. 2009. Oil on shaped masonite, 120 x 180 cm.

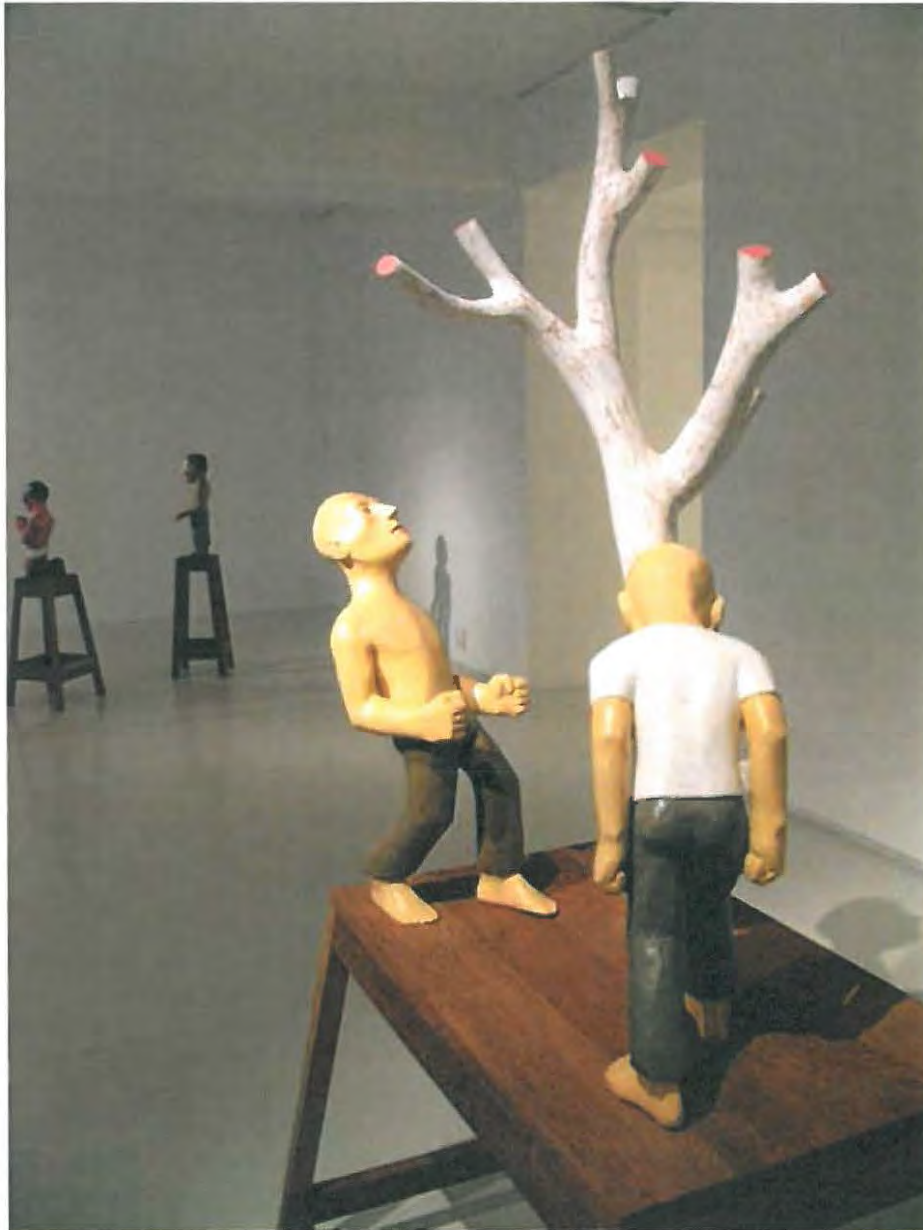


Fig.3.13: Conrad Botes. *Tree of Knowledge*. 2007. Enamel on obeche and yellowwood, iroko, 93.5 x 171 cm (dimensions include pedestal).



Fig.3.14: Tracey Rose. *Adam and Yves, BC*. 2003. Lambda photograph, 82 x 82 cm.

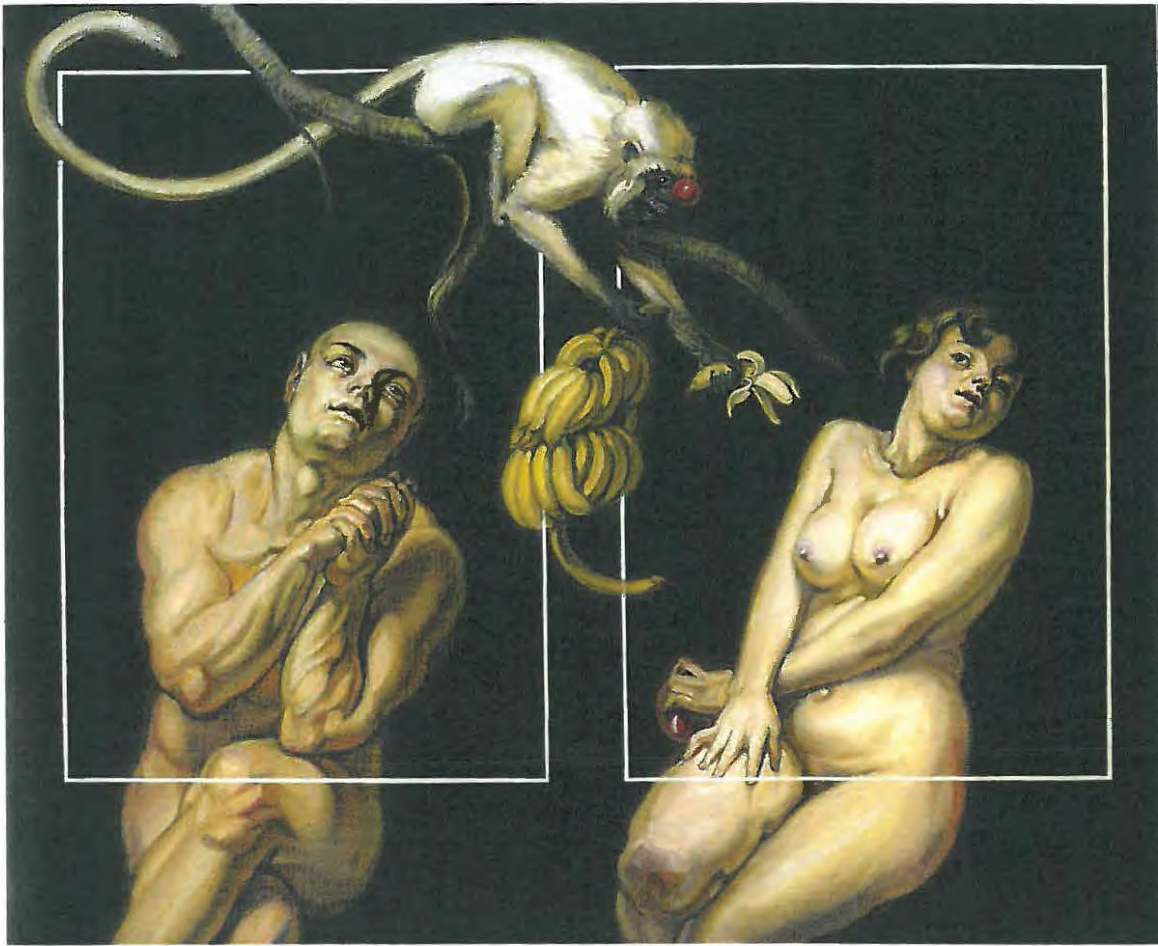


Fig.3.15: Johannes Phokela. *Prozac*, 2005. Oil on canvas, 110 x 137 cm.



Fig.4.1: Rogier van der Weyden. *Portrait Diptych of Jean de Gros* (left wing). c.1450. Oil on oak panel, 36 x 27 cm. Musée des Beaux-Arts, Tournai.



Fig.4.2: Robert Campin. *Virgin and Child*. c.1410. Oil on wood, 160 x 68 cm. Städelsches Kunstinstitut, Frankfurt.



Fig.4.3: Raphael. *Madonna in the Meadow*. 1505-1506. Oil on wood, 113 x 88 cm. Kunshistorisches Museum, Vienna.



Fig.4.4: Raphael. *The Bridgewater Madonna*. c.1507. Oil and gold on canvas, transferred from panel, 81 x 55 cm. Duke of Sutherland Collection, on loan to the National Gallery of Scotland, Edinburgh.



Fig.4.5: Jan van Eyck. *Virgin and Child with Chancellor Rolin*. c.1435. Oil on panel, 66 x 62 cm. Louvre, Paris.



Fig.4.6: Rogier van der Weyden. *Virgin and Child in a Niche*. c.1435-1438. Oil on oak, 100 x 52 cm. Museo del Prado, Madrid.



Fig.4.7: Dante Gabriel Rossetti. *The Girlhood of Mary Virgin*. c.1848-1849. Oil on canvas, 83.2 x 65.4 cm. Tate, Britain.



Fig.4.8: Diane Victor. *The Eight Marys* (1-4). 2004. Charcoal and pastel on paper, each 170 x 51 cm. Hollard Collection.



Fig.4.9: Diane Victor. *The Eight Marys* (5-8). 2004. Charcoal and pastel on paper, each 170 x 51 cm. Hollard Collection.



Fig.4.10: Sir Johan Everett Millais. *Christ in the House of His Parents ('The Carpenter's Shop')*. c.1849-1850. Oil on canvas, 86.4 x 139.7 cm. Tate, Britain.



Fig.4.11: Titian. *Venus of Urbino*. 1538. Oil on canvas, 119.5 x 165 cm. Galleria degli Uffizi, Florence.



Fig.4.12: Giorgione. *Sleeping Venus*. c.1509. Oil on canvas, 108.5 x 175 cm. Gemäldegalerie Alte Meister, Staatliche Kunstsammlungen, Dresden.



Fig.4.13: Medici Venus (known as the Venus Pudica or modest Venus). 3rd Century B.C. Marble, height 1.53 m. Galleria degli Uffizi, Florence.

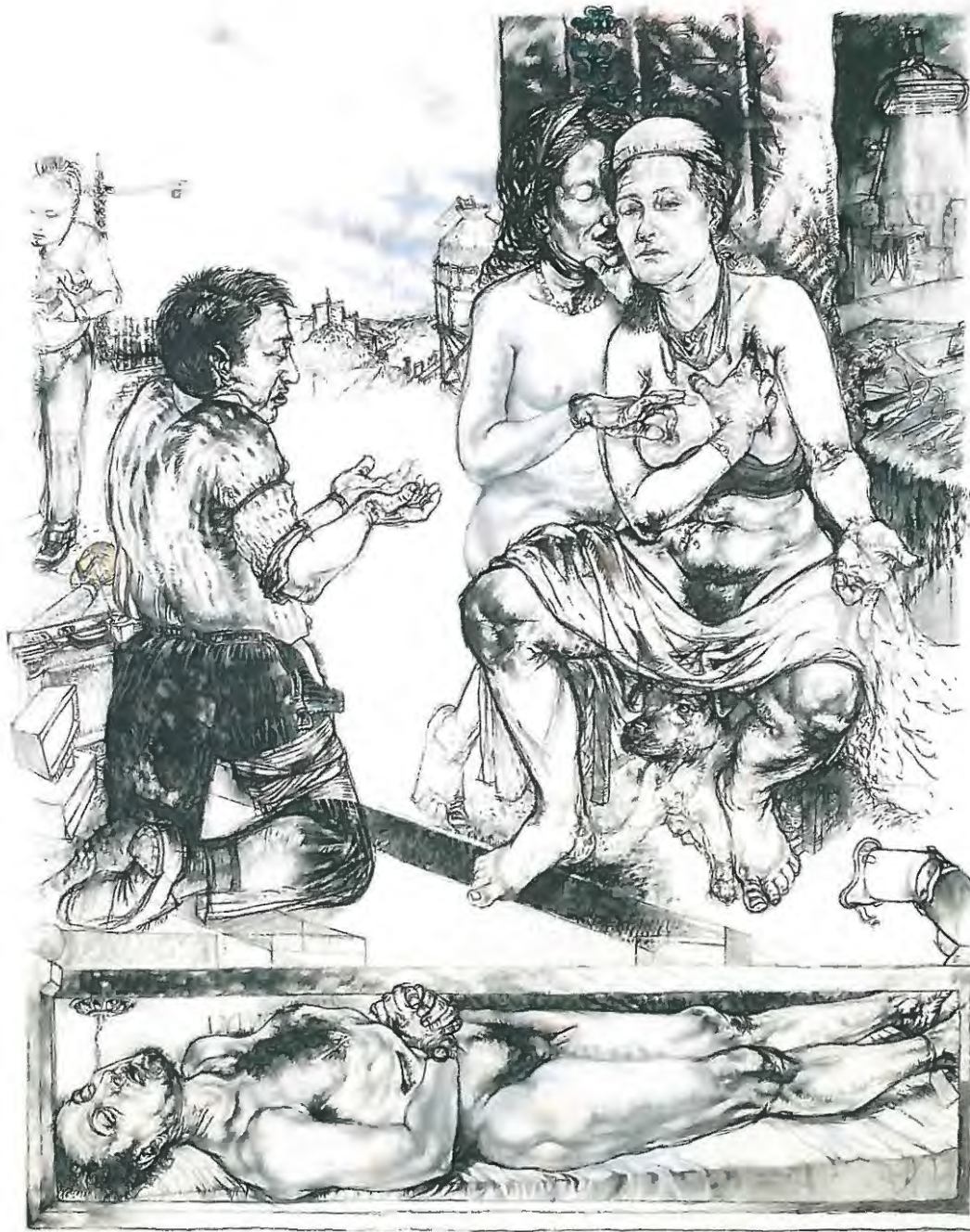


Fig.4.14: Diane Victor. *Reconstruction Site*. 1992. Charcoal and pastel on paper, 200 x 150 cm. Gertrude Posel Collection, University of the Witwatersrand, Johannesburg.



Fig.4.15: Attributed to St. Amadour. *Madonna Enthroned With Child*. 12th Century. Wood covered in blackened silver, 66 cm. Rocamadour, France.



Fig.4.16: *Notre Dame du Pilier*. 15th Century. Stone. Chartres Cathedral, France.



Fig.4.17: *Black Madonna of Breznichar in Bohemia.* 1396. National Gallery, Prague.



Fig.4.18: Attributed to St. Luke the Evangelist. *Black Madonna of Częstochowa.* 13th Century. Painting on wood, 122.2 x 82.2 x 3.5 cm. Monastery of Jasna Góra in Częstochowa, Poland.



Fig.4.19: Majak Bredell. *Black Madonna – Goddess of Beginnings*. 2008. Fabric and oil on masonite, 120 x 180 cm.



Fig.4.20: Majak Bredell. *Black Madonna I, II and III*. 2009. Oil on masonite, each 97 x 127 cm.



Fig.4.21: Majak Bredell. *Virgin - Black*. 2009. Etching, 38 x 57 cm.



Fig.4.22: Majak Bredell. *Annunciation - Virgin*. 2009. Fabric and oil on masonite, 60 x 180 cm.

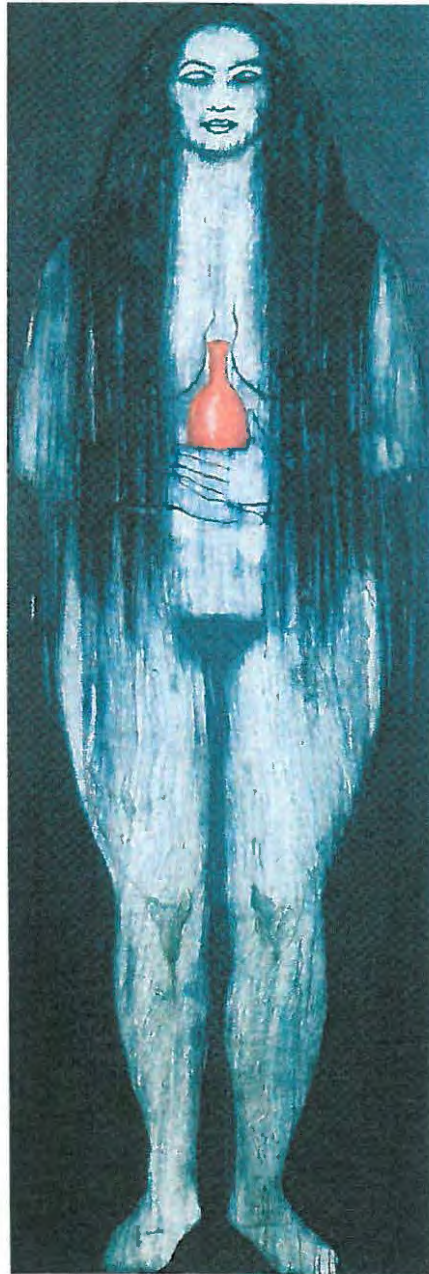


Fig.4.23: Majak Bredell. *Eve – Not Guilty, and Magdalen – Not Guilty*. 2008. Oil on masonite, each 60 x 180 cm.



Fig.4.24: Majak Bredell. *Chthonic Eve and Chthonic Mary*. 2009. Oil on masonite, each 60 x 180 cm.



Fig.4.25: Majak Bredell. *Black Madonna and Sisters*. 2009. Oil on shaped masonite, 120 x 240 cm.



Fig.4.26: Duccio di Buoninsegna. *Rucellai Madonna*. 1285. Tempera on wood panel, 450 x 290 cm. Galleria degli Uffizi, Florence.



Fig.4.27: Master of San Martino. *Madonna and Child*. 1270-90. Museo Nazionale di San Matteo, Pisa.



Fig.4.28: Tracey Rose. *Lucie's Fur Version 1:1:1 – La Messie*. 2003. Lambda photograph, 148 x 102 cm.



Fig.4.29: Tracey Rose. *Lucie's Fur Version 1:1:1 – Fucking Flowers*. 2003. Lambda photograph, 54 x 80 cm.



Fig.4.30: Tracey Rose. *Ciao Bella – Lolita*. 2001. Lambda photograph, 119 x 119 cm.



Fig.4.31: Tracey Rose. *Ciao Bella – Cicciolina*. 2001. Lambda photograph, 117.5 x 118 cm.

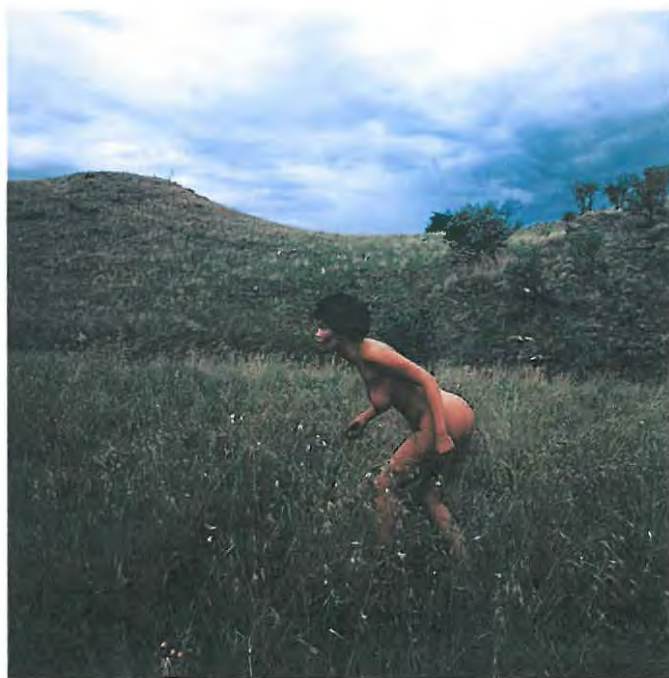


Fig.4.32: Tracey Rose. *Ciao Bella – Venus Baartman*. 2001. Lambda photograph, 119 x 119 cm.



Fig.4.33: Tracey Rose. *Ciao Bella – Lovemefuckme*. 2001. Lambda photograph, 118 x 118 cm.



Fig.4.34: Tracey Rose. *Bunny*. 2002. Lambda photograph, 118.5 x 119 cm.



Fig.4.35: Tracey Rose. *Mami* (detail). 2001. Lambda photograph, 119 x 119 cm.



Fig.4.36: Tracey Rose. *Regina Coeli*. 2001. Lambda photograph, 127 x 127 cm.



Fig.4.37: Tracey Rose. *Ciao Bella – MAQEII*. 2002. Lambda photograph, 118.5 x 118.5 cm.



Fig.4.38: Tracey Rose. *Lucie's Fur Version 1:1:1 - L'Annunciazione (After Fra Angelico)*, c.1434-2003. 2004. Lambda photograph, 124 x 156.5 cm.



Fig.4.39: Fra Angelico. *Annunciation*. 1451-1452. Tempera on wood, 38.5 x 37 cm. Museo di San Marco, Florence.



Fig.4.40: Tracey Rose. *Lucie's Fur Version 1:1:1 – The Messiah*. 2003. Lambda photograph, 148 x 102 cm



Fig.4.41: Tracey Rose. *Lucie's Fur Version 1:1:1 – Annunciation Context*. 2003. Lambda photograph.

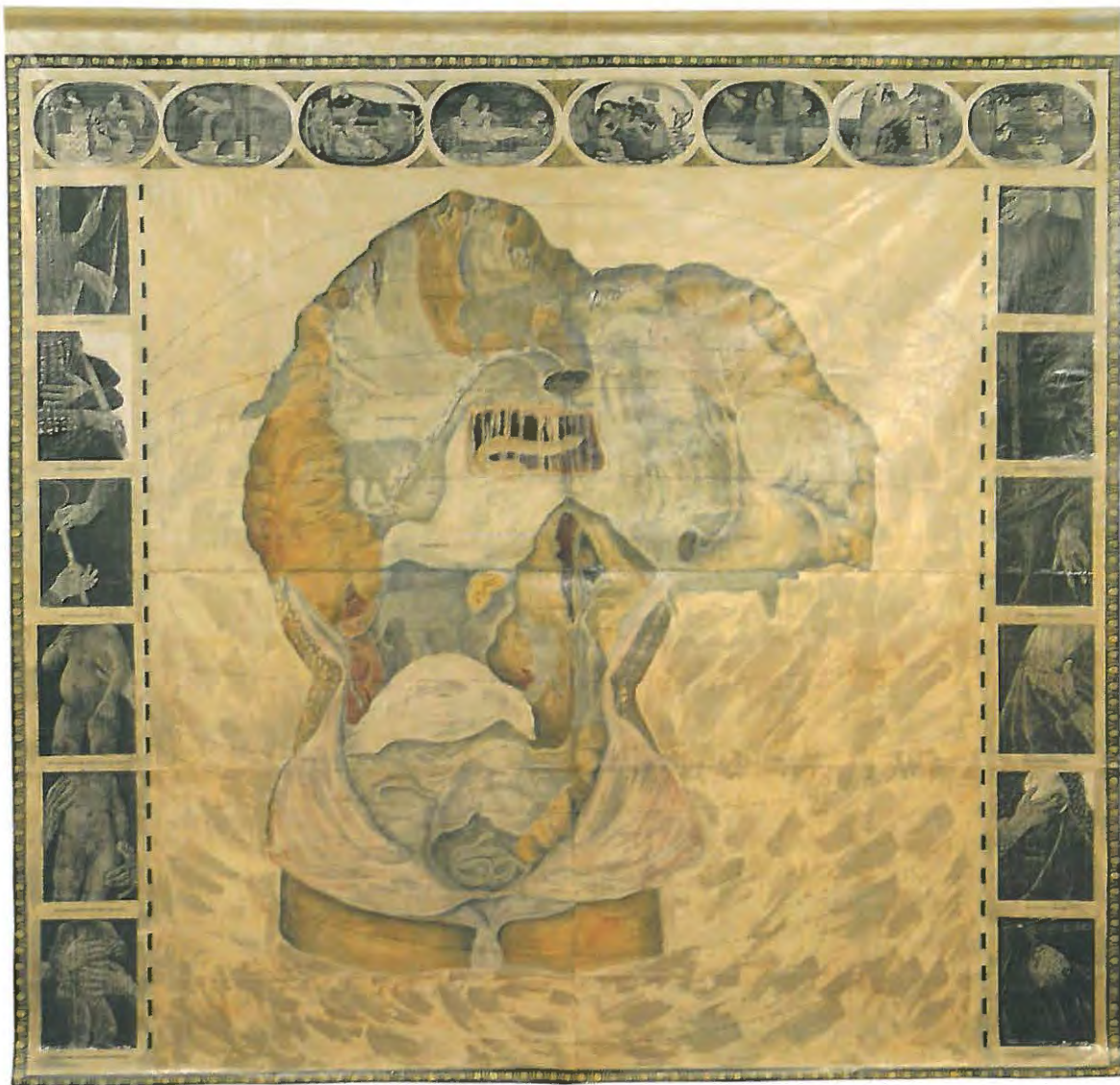


Fig.4.42: Christine Dixie. *The Interior*. 2006. Linocut, woodcut, latex and thread, 300 x 347 cm. Photograph by Brent Meistre.



Fig.4.43: G. Blaeu. *Map of Africa* from *Grooten Atlas*. 1648-1665. British Library.



Fig.4.44: Christine Dixie. *Parturition – Mucosa*. 2006. 'Reliquary' with woodcut on silicone, thread, found objects and electrical light, 90 x 47 cm.



Fig.4.45: Ernest Barrias. *Nature Unveiling Herself to Science*. 1899. Marble and polychrome onyx from Algeria, grey granite pedestal, malachite scarab, lapis lazuli ribbon, 200 x 85 x 55 cm. Musée d'Orsay, Paris.



Fig.4.46: Christine Dixie. *Parturition – Umbilicus*. 2006. 'Reliquary' with woodcut on silicone, thread, found objects and electrical light, 90 x 47 cm.



Fig.4.47: Christine Dixie. *Parturition – Vestibule*. 2006. 'Reliquary' with woodcut on silicone, thread and found objects, 90 x 47 cm.



Fig.4.48: Christine Dixie. *Parturition – Lactéal*. 2006. 'Reliquary' with woodcut on silicone, thread, found objects and electrical light, 90 x 47 cm.



Fig.4.49: Christine Dixie. *Blocking Bellini's Madonna and Child*. 2008. Woodcut on paper, 650 x 990 cm.



Fig.4.50: Christine Dixie. *Blocking Bellini's Child with Saints*. 2008. Woodcut on paper, 650 x 990 cm.



Fig.4.51: Christine Dixie. *Blocking Mantegna's Holy Family*. 2008. Woodcut on paper, 650 x 990 cm.



Fig.4.52: Christine Dixie. *Blocking Masolini's Maria Lactans*. 2008. Woodcut on paper, 650 x 990 cm.



Fig.4.53: Christine Dixie. *Blocking Van Cleve's Nursing Virgin*. 2008. Woodcut on paper, 650 x 990 cm.



Fig.4.54: Christine Dixie. *Blocking Van Eyck's Paele Virgin*. 2008. Woodcut on paper, 650 x 990 cm.

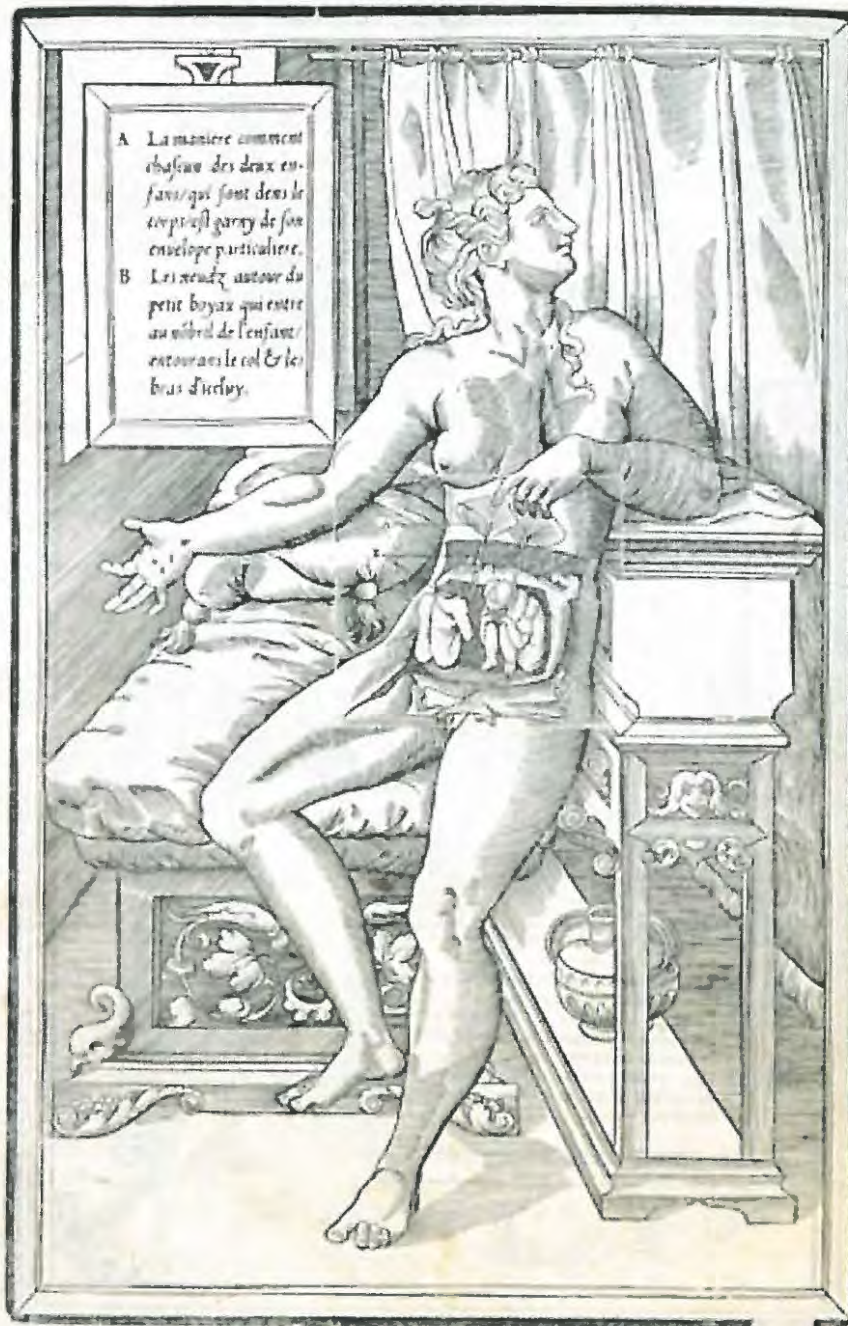


Fig.4.55: Charles Estienne. Anatomical study from *De dissectione partium corporis humani*. 1545. Woodcut. Getty Research Institute, Research Librabry, Los Angeles.



Fig.4.56: Wim Botha. *Carbon Copy (Madonna del parto col bambino)*. 2001. Anthracite, liquid petroleum gas, height 110 cm, installation dimensions variable. Sasol Collection, Johannesburg.



Fig.4.57: Michelangelo Buonarroti. *Bruges Madonna*. 1501-1504. Marble, height 128 cm. Onze Lieve Vrouwekerk, Bruges.



Fig.4.58: Wim Botha. *Mieliepap Pietà*. 2004. Maize meal, epoxy resin, life size. Installation view, Cathedral of St John the Divine, New York. Spier Collection, Cape Town.

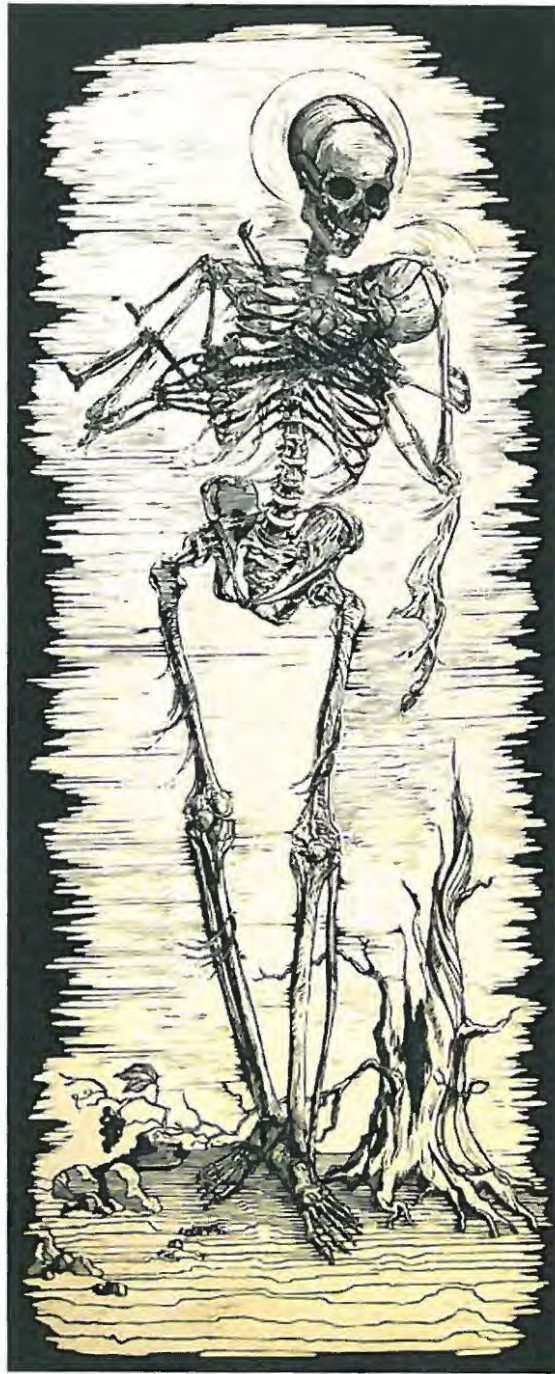


Fig.4.59: Wim Botha. *Apocalumbilicus*. 2006. Linoprint on tea-stained Hahnemühle, wood, brown paper tape, coffee and water, 197.4 x 80.5 cm.



Fig.4.60: Joseph Beuys. *How to Explain Pictures to a Dead Hare*. 1965. Photograph from the performance on 26 November 1965.



Fig.4.61: Conrad Botes. *Pietà*. 2007. Installation including 10 roundels. Oil-based paint on glass, dimensions variable.



Fig.5.1: Anonymous. [Sa]. *Arch Wood Icon – Sacred Heart of Jesus*. Painting on board and wood, 9.1 x 11.4 cm.

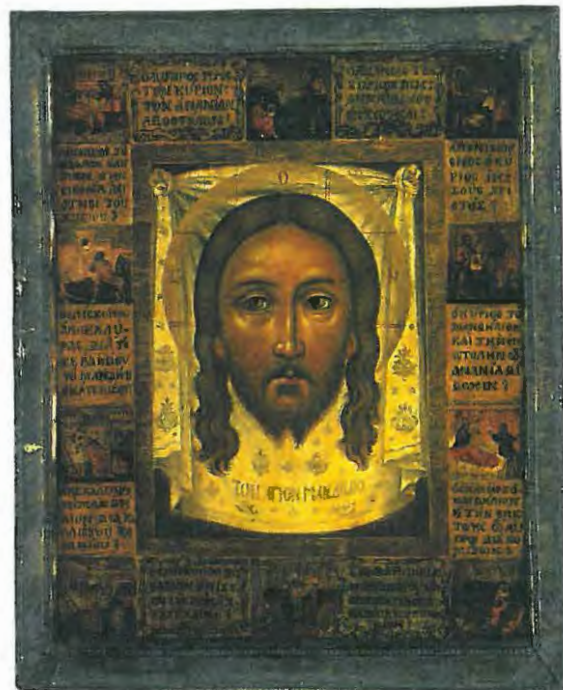


Fig.5.2: *Icon of Mandylion of Edessa*. 18th Century. Egg tempera with resin glazes on wood, 40 x 32 cm. The Royal Collection Trust, Hampton Court.



Fig.5.3: Master of Saint Veronica. *Saint Veronica with the Sudarium*. c.1420. Oil on walnut, 44.2 x 33.7 cm. National Gallery, London.



Fig.5.4: Diane Victor. *Little Deposition Picture*. 2002. Charcoal and pastel on paper, 200 x 150 cm.

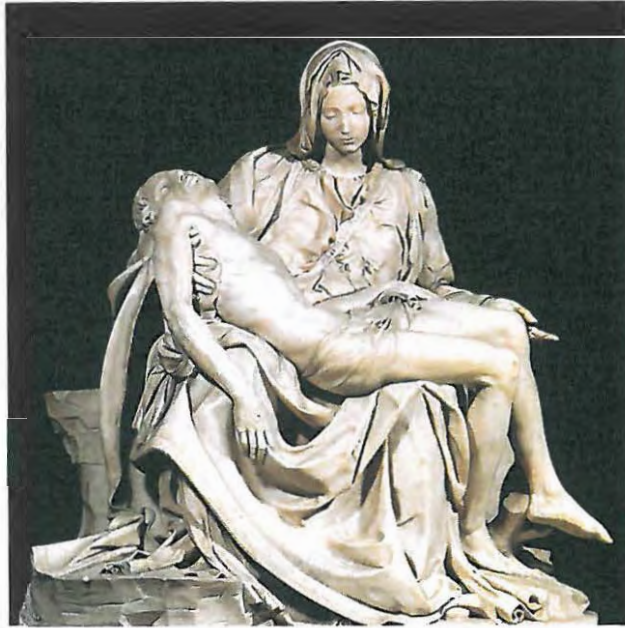


Fig.5.5: Michelangelo Buonarotti. *Pietà*. c.1498-1500. Marble, height 174 cm. Saint Peter's, Vatican City, Rome.



Fig.5.6: Michelangelo Buonarotti. *Risen Christ*. c.1514-1520. Marble, height 205.1 cm. Santa Maria sopra Minerva, Rome.



Fig.5.7: Diane Victor. *Eight Marys* (panel 5). 2004. Charcoal and pastel on paper, 170 x 51 cm. Hollard Collection.



Fig.5.8: Wim Botha. *Commune: suspension of disbelief* (back view). 2001. Carved Bibles and Bible text, surveillance equipment, installation dimensions variable, figure life-sized. Johannesburg Art Gallery Collection.



Fig.5.9: Wim Botha. *Commune: suspension of disbelief* (front view). 2001. Carved Bibles and Bible text, surveillance equipment, installation dimensions variable, figure life-sized. Johannesburg Art Gallery Collection.



Fig.5.10: Wim Botha. *Commune: suspension of disbelief* (detail, CCTV monitor feed). 2001. Carved Bibles and Bible text, surveillance equipment, installation dimensions variable, figure life-sized.



Fig.5.11: Wim Botha. *Commune: suspension of disbelief* (installation view). 2001. Carved Bibles and Bible text, surveillance equipment, installation dimensions variable, figure life-sized.



Fig.5.12: Wim Botha. *Premonition of War (Scapegoat)*. 2005. Burnt African hardwood, resin, eco solvent inks on satin paper, gilt. Sculpture 188 x 152 x 64 cm; Installation 202 x 653 x 64 cm.



Fig.5.13: Wim Botha. *Scapegoat*. 2005. Anthracite, epoxy resin, wood, eco-solvent inks on satin paper, resin, gilt. Installation view, Monument Gallery, Grahamstown.



Fig.5.14: Wim Botha. *The Avenger* (detail of *Tremor*). 2005. Oil on canvas, 110 x 81 cm.



Fig.5.15: Wim Botha. *Tremor* (detail showing *Tree of Knowledge*). 2005. Stained glass frames, 360 x 236 x 22 cm.

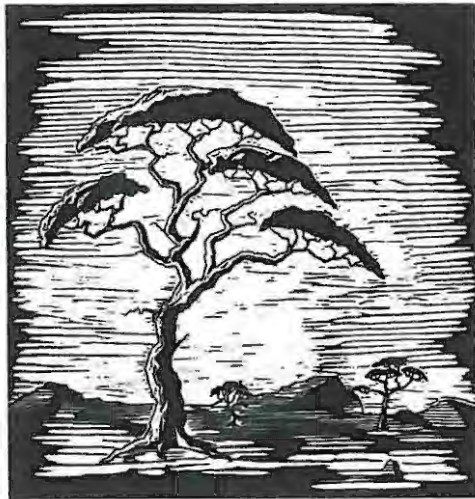


Fig.5.16: Wim Botha. *Blastwave*. 2005. Linoprints on tea-stained paper, each 48.5 x 49 cm.



Fig.5.17: Wim Botha. *Tremor*. 2005. Mixed media installation, ceiling 85 x 780 x 355 cm.



Fig.5.18: Wim Botha. *Vanitas* (detail of *Tremor*). 2005. Oil on canvas, 52 x 62 cm.

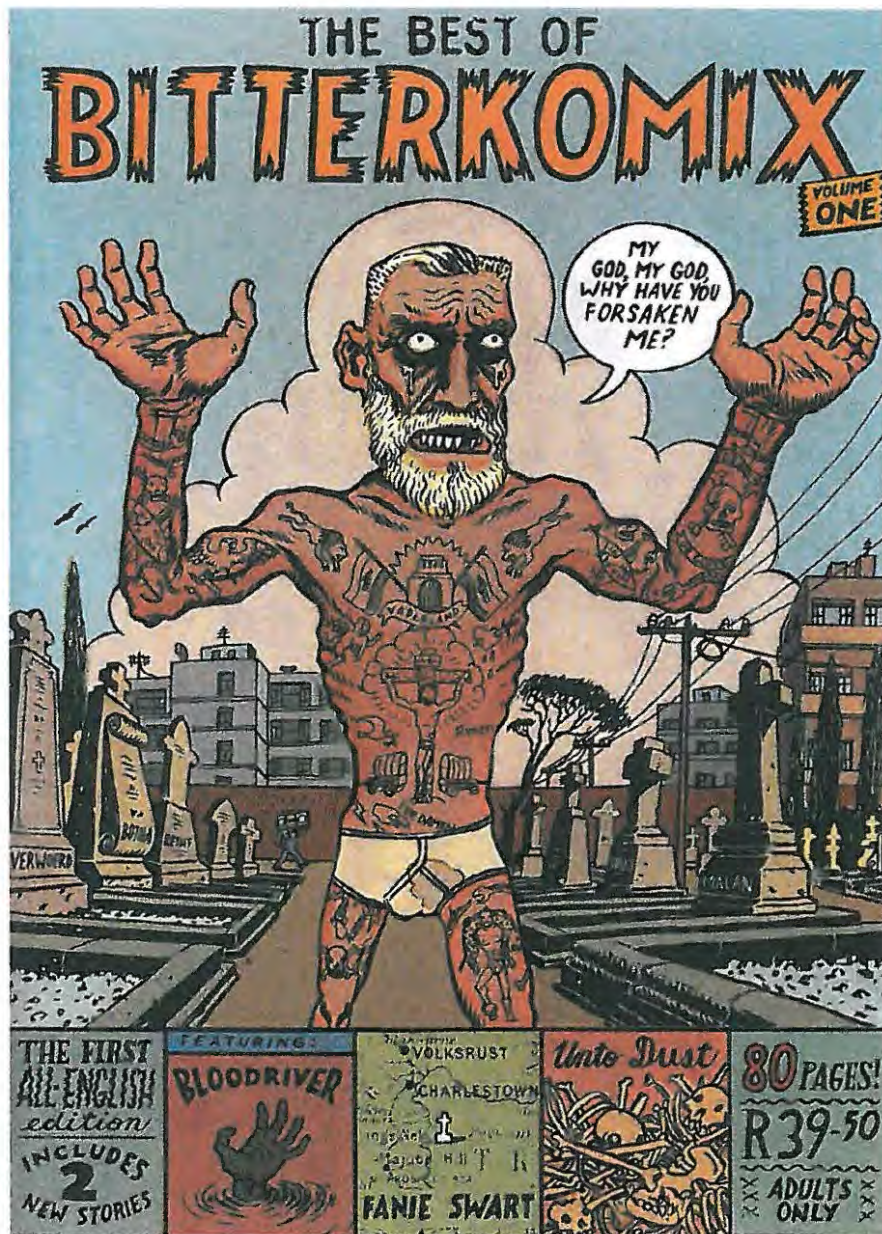


Fig.5.19: Konradski (Conrad Botes). Cover of *The Best of Bitterkomix, Vol. 1*. 1998.



Fig.5.20: Conrad Botes. *Here Comes the Law*. 2003. Reverse glass painting, 60 x 60 cm.



Fig.5.23: Conrad Botes. *Forensic Theatre: Empire of Error*. 2004. Silkscreen and acrylic on canvas, 500 x 200 cm.



Fig.5.24: Conrad Botes. *Terrible Things Are About to Happen*. 2003. Reverse glass painting, 60 cm diameter.

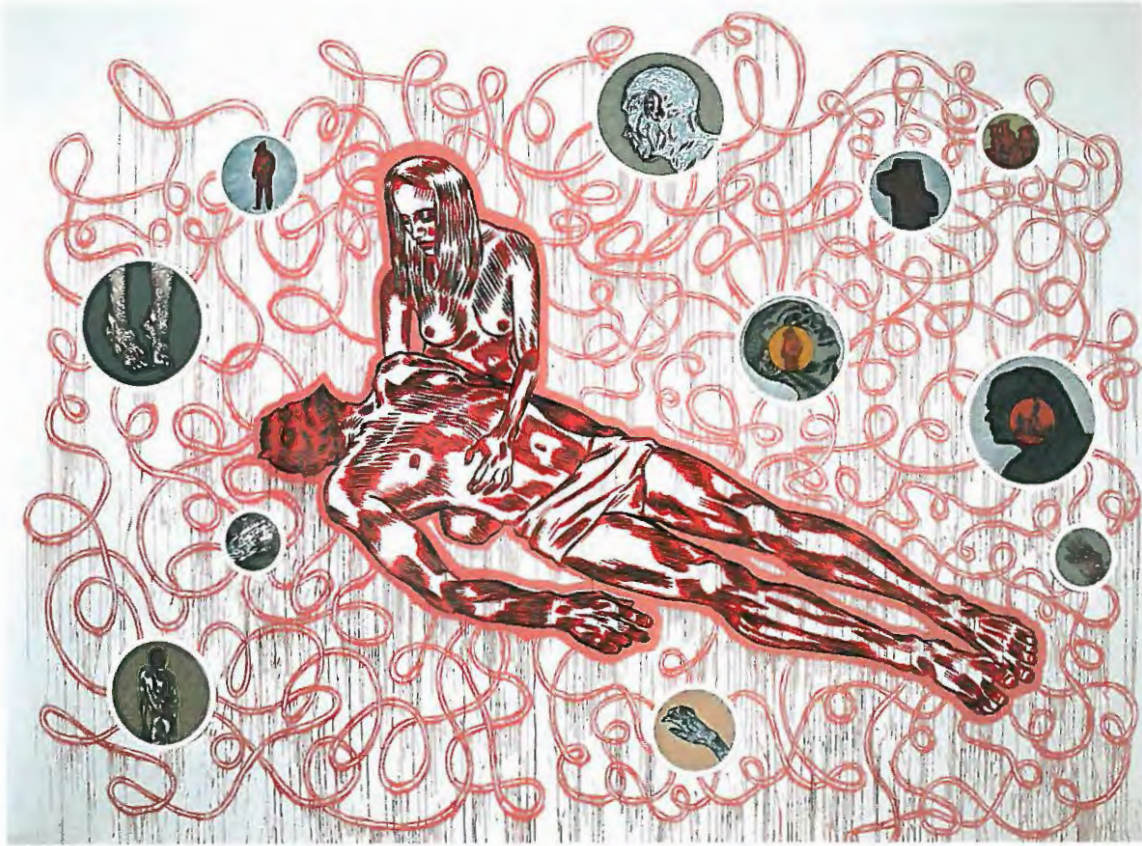


Fig.5.25: Conrad Botes. *Pietà*. 2006. Installation including 15 roundels. Oil-based paint on glass (work in progress), dimensions variable.



Fig.5.26: Conrad Botes. *Pietà* (details). 2006. Oil-based paint on glass.



Fig.5.27: Leonardo Da Vinci. *Last Supper*. c.1495-1498. Oil and tempera on plaster, 460 x 880 cm. Refectory, Santa Maria delle Grazie, Milan.



Fig.5.28: Lawrence Lemaoana. *The Discussion*. 2005. Digital print on cotton rag paper, 112 x 173 cm. Edition of 10.



Fig.5.29: Lawrence Lema'aoana. *Defenceless*. 2008. Textile and embroidery, 155.5 x 111 cm. Edition of 2.



Fig.5.30: Lawrence Lema'aoana. *Last Line of Defence*. 2008. Pigment inks on cotton paper, 77.5 x 125 cm. Edition of 10.

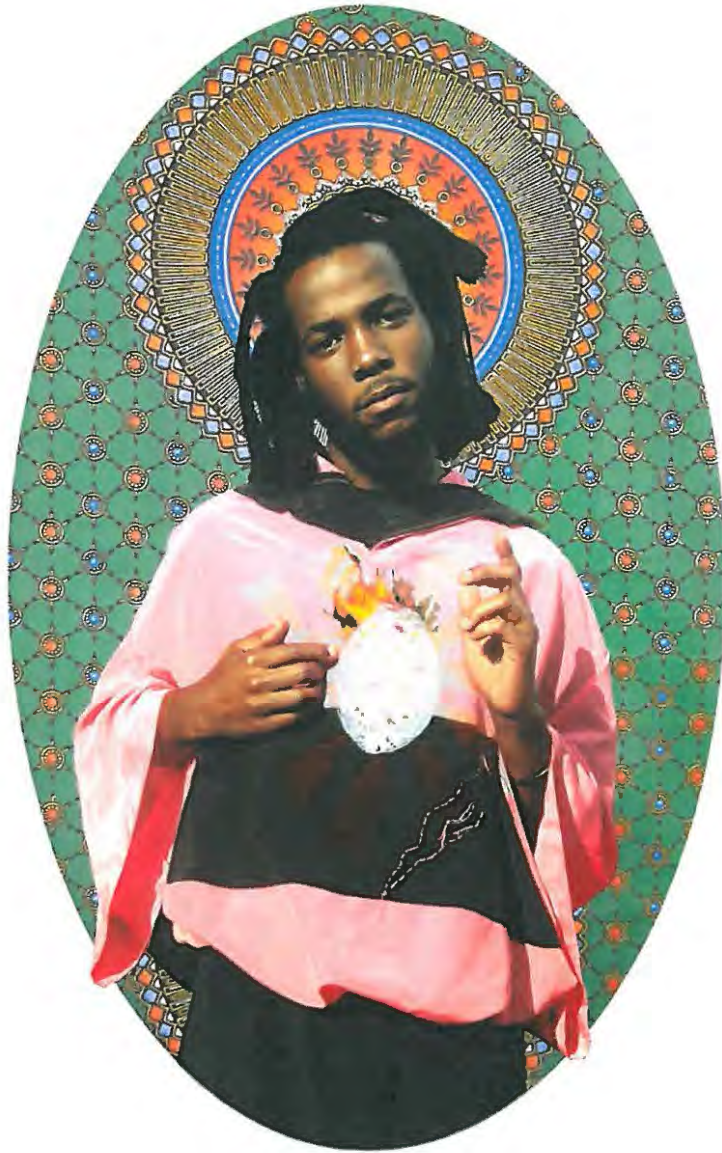


Fig.5.31: Lawrence Lemaoana. *The One*. 2006. Digital print on cotton rag paper, 59.5 x 42 cm. Edition of 10.



Fig.6.1: Wim Botha. *Premonition of War (Abraham and Isaac)*. 2005. Eco solvent inks on satin paper, bronze, resin, gilt. Installation 244 x 330 x 27.5 cm.



Fig.6.2: Wim Botha. *Premonition of War (Abraham and Isaac)* (detail). 2005. Eco solvent inks on satin paper, bronze, resin, gilt. Bronze 23.5 x 35 x 18 cm.



Fig.6.3: Jan van Eyck. *The Virgin with the Canon van der Paele*. 1436. Oil on wood, 122 x 157 cm. Musées Communaux, Bruges.



Fig.6.4: Hieronymus Bosch. *The Adoration of the Kings* (*Epiphany Triptych* middle panel). c.1495. Oil on wood, 138 x 72 cm. The Prado, Madrid.



Fig.6.5: Hieronymus Bosch. *The Adoration of the Kings* (detail). c.1495. Oil on wood, 138 x 72 cm. The Prado, Madrid.



Fig.6.6: Ghiberti. *Sacrifice of Isaac*. 1401. Bronze relief. Museo Nazionale del Bargello, Florence. (L)



Fig.6.7: Donatello. *The Sacrifice of Isaac*. 1418. Marble. (R)



Fig.6.8: George Segal. *The Sacrifice of Isaac*. 1973. Plaster, 213 x 274 x 259 cm. Mann Auditorium, Tel Aviv. Donated by the Tel Aviv Foundation for Literature and Art to the City of Tel Aviv-Yafo.



Fig.6.9: George Segal. *In Memory of May 4, 1970, Kent State: Abraham and Isaac*. 1978. Painted plaster, rope and metal, 213 x 304 x 127 cm. The John B. Putnam, Jr. Memorial Collection, Princeton University, New Jersey.



Fig.6.10: Christine Dixie. *The Binding*. 2010. Installation.



Fig.6.11: Christine Dixie. Installation accompanying *To Dream* (detail). 2010. Plastic toy soldiers.



Fig.6.12: Christine Dixie. *Burning* (installation view). 2010.



Fig.6.13: Christine Dixie. *To Sleep*. 2009. Etching, collagraph, 197 x 125 cm. Edition of 10.



Fig.6.14: Christine Dixie. *To Dream*. 2009. Etching, collagraph, 197 x 125 cm. Edition of 10.



Fig.6.15: Christine Dixie. *To Dream* (detail). 2009. Etching, collagraph, 197 x 125 cm. Edition of 10.

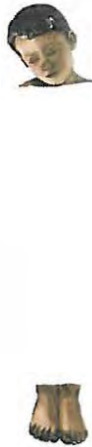


Fig.6.16: Christine Dixie. *Bind*. 2009. Etching, collagraph, 197 x 125 cm. Edition of 10.



Fig.6.17: Christine Dixie. *Burning*. 2009. Etching, collagraph, 197 x 125 cm. Edition of 10.



Fig.6.18: Christine Dixie. *Offering*. 2009. Etching, collagraph, 197 x 125 cm. Edition of 10.

Fig.6.19: Christine Dixie. *Blind* (detail). 2009. Etching, collagraph, 197 x 125 cm. Edition of 10.



Fig.6.20: Christine Dixie. *Blind* (installation view). 2010. Plastic toy soldiers.



Fig.6.21: Conrad Botes. *Cain and Abel*. 2008. Lithograph, 105 x 75 cm. Edition of 30.



Fig.6.22: Conrad Botes. *Cain Slays Abel*. 2008. Oil based paint on reverse glass, series of 15 panels, 25 x 25 cm (framed).

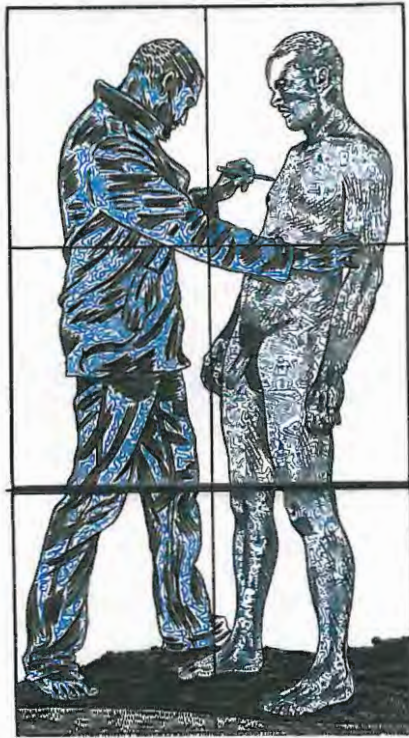


Fig.6.23: Conrad Botes. *Cain and Abel*. 2008. Oil based paint on reverse glass, powder-coated steel frame, lead. 6 panels, 241 x 100.5 cm.

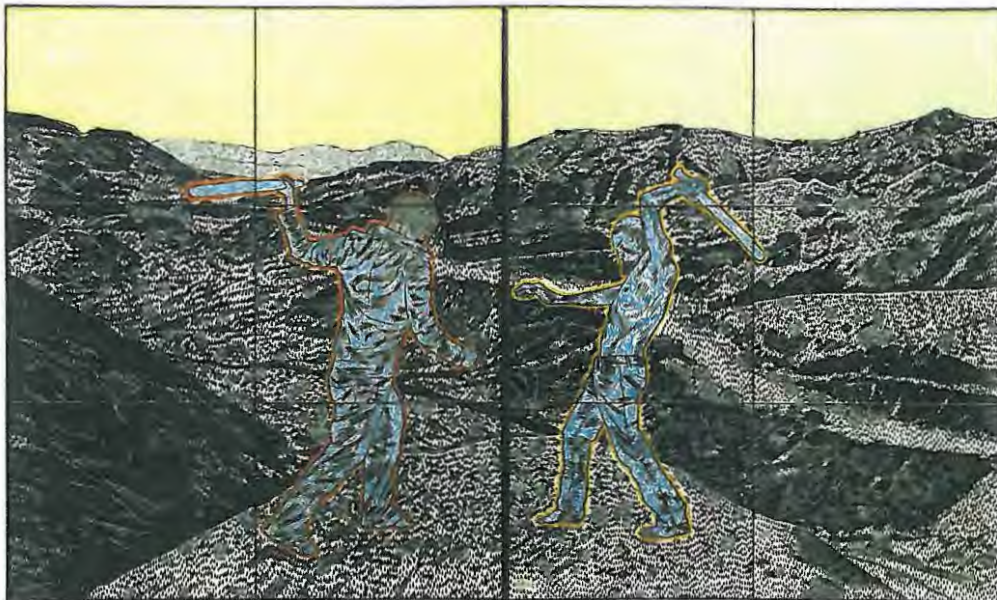


Fig.6.24: Conrad Botes. *Cain and Abel*. 2008. Oil based paint on reverse glass, powder-coated steel frame, lead. Diptych, 12 panels, 145 x 241 cm.



Fig.6.25: Conrad Botes. *On Earth as it is in Heaven*. 2009. American walnut, glass, lead, fluorescent lamps, 247 x 98.5 x 32 cm. (L)



Fig.6.26: Rubens. *Fall of the Damned*. 1620. Oil on canvas, 286 x 224 cm. (R)

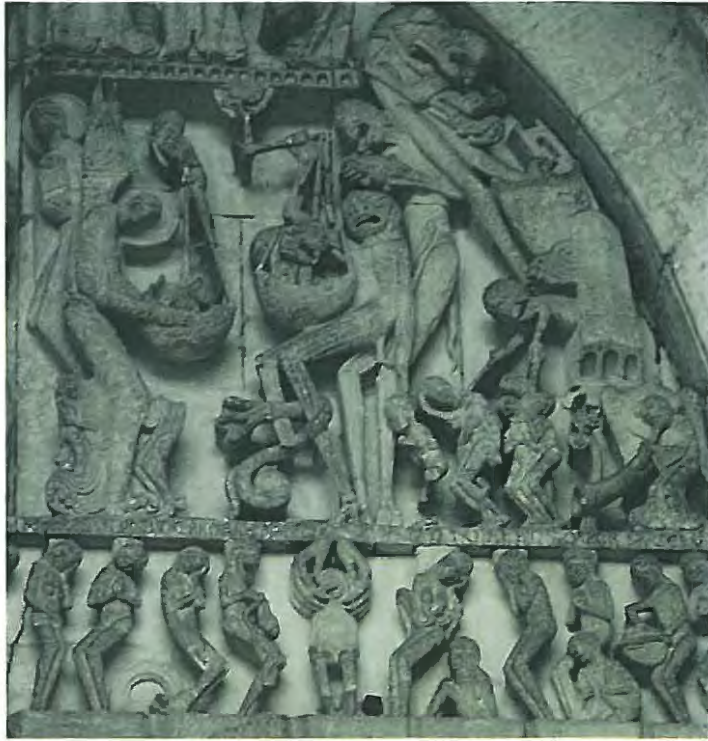


Fig.6.27: Tympanum of St. Lazare, Autun, France. (detail). c.1130-35.



Fig.6.28: Diane Victor. *Stained Gods*. 2004. Charcoal stain on paper, each 150 x 80 cm. SABC Collection.



Fig.6.29: Diane Victor. *Untitled*. From the series *The Recently Dead*. 2006. Smoke on paper, 42 x 30 cm.



Fig.6.30: Diane Victor. *In Smoke and Stain – The Recent Dead*. Detail. 2006. Smoke drawings, each 59 x 42 cm.



Fig.6.31: Diane Victor. *The Good Preacher*. 2006. Etching, aquatint, mezzotint, charcoal stain, smoke and razor cuts, 200 x 100 cm. Sasol Collection.



Fig.6.32: Diane Victor. *The Good Doctor*. 2006. Etching, aquatint, mezzotint, charcoal stain, smoke and razor cuts, 200 x 100 cm.



Fig.6.33: Diane Victor. *The Honest Politician*. 2006. Etching, aquatint, mezzotint, charcoal stain, smoke and razor cuts, 200 x 100 cm.



Fig.6.34: Diane Victor. *Minder, Mater, Martyr*. 2004. Etching, aquatint, mezzotint and embossing, each 200 x 100 cm. Editions of 10.



Fig.6.35: Diane Victor. *Mater*. 2004. Etching, aquatint, mezzotint and embossing, 200 x 100 cm.

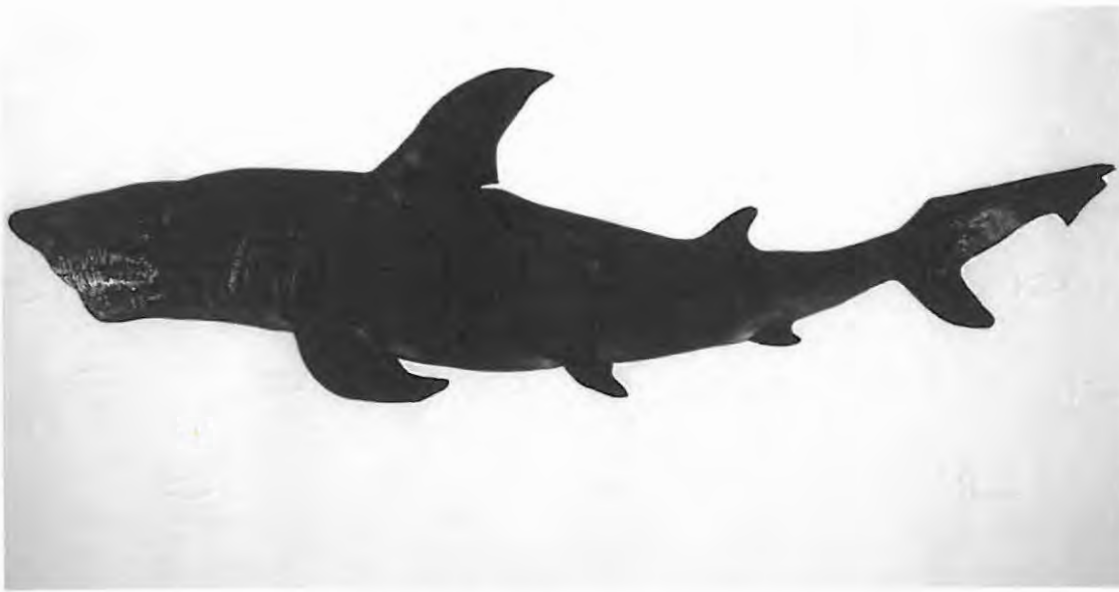


Fig.6.36: Diane Victor. *Upstream*. 2002. Etching, aquatint, mezzotint and embossing, 100 x 200 cm.



Fig.6.37: Shrine Figure – *Mami Wata*. Nigeria, Ibibio, Annang. 20th century A.D. Wood, kaolin, pigment, paint, 87 x 61 x 25 cm. Gift of William S. Arnett. Michael C. Carlos Museum, Emory University.



Fig.6.38: Diane Victor. *Minder*. 2004. Etching, aquatint, mezzotint and embossing. 200 x 100 cm.



Fig.6.39: Titian. *Penitent Magdalen*. c.1531-33. Oil on wood panel, 84 x 69 cm. Galleria Palatina, Palazzo Pitti, Florence.



Fig.6.40: Diane Victor. *Martyr*. 2004. Etching, aquatint, mezzotint and embossing, 200 x 100 cm.



Fig.6.41: Pietro Perugino. *St. Sebastian*. c.1495. Oil on wood panel, 170 x 117 cm. Louvre Museum, Paris. (L)



Fig.6.42: Power Figure (*nkisi*) Kongo people, Central Africa. Dimensions not available. Biblioteca do Museu Antropológico, Universidade de Coimbra, Portugal. (R)



Fig.6.43: Diane Victor. *Practicing Poise*. 2004. Etching, aquatint, mezzotint and embossing, 200 x 150 cm. Edition of 10.



Fig.7.1: Diane Victor. *4 Horses: Bearer*. 2010. 105 x 199 cm. Etching and digital printing, Ap. i/ii.

ILLUSTRATIONS SOURCE LIST

Introduction:

Fig.0.1

Art Experts Inc. [Sa]. Max Ernst. [O]. Available:
http://www.artexpertswebsite.com/pages/artists/artists_ak/ernst/Ernst_VirginSpankingChristChild.jpg
Accessed: 12.10.2010

Fig.0.2

Kleiner, F.S. 2009. *Gardner's Art Through the Ages: A Global History*. Thirteenth Edition. Boston: Thomson Wadsworth. p.319

Fig.0.3

de la Croix, H. and Tansey, R.G. (eds). 1970. *Gardner's Art Through the Ages*. Fifth Edition. New York, Chicago, San Francisco and Atlanta: Harcourt, Brace and World, Inc. Plate 7-5.

Chapter One:

Fig.1.1

Artinfo. [Sa]. Serrano's *Piss Christ* 1987. [O]. Available:
http://www.artinfo.com/news/enlarged_image/35266/200298/
Accessed: 13.10.2010

Fig.1.2

Artworks. 2007. Chris Ofili: The Holy Virgin Mary. *ABC Radio National – Artworks*. [O]. Available:
<http://www.abc.net.au/m/artworks/galleries/2008/2321585/image1.htm>
Accessed: 13.10.2010

Fig.1.3

Studio International. [Sa]. Angus Fairhurst. *Pieta*. 1996. Photograph: Prudence Cuming Associates. [O]. Available:
http://www.studio-international.co.uk/studio-images/hirst07/fairhurst_b.asp
Accessed: 29.1.2010

Fig.1.4

Muir, G. and Wallis, C. (eds). 2004. *In-a-Gadda-Da-Vida*. Exhibition Catalogue, Tate Britain 3 March-31 May 2004. London: Tate Publishing. p.37.

Fig.1.5

Kannemeyer, A. and Botes, C. 2006. *The Big Bad Bitterkomix Handbook*. Johannesburg: Jacana. p.116.

Fig.1.6

Te Kakano. [Sa]. *Taonga database: Auckland Museum*. [O]. Available:
<http://tekakano.aucklandmuseum.com/objectdetail.asp?database=maori&objectid=86>
Accessed: 12.2.2010

Chapter Two:

Fig.2.1

Mbatha, A. 1998. Theories That Did Not Succeed in Practice. In J. Addleson (Curator). *Azaria Mbatha: Retrospective Exhibition*. Catalogue. Durban Art Gallery: 14 October to 30 November 1998. p.58.

Fig.2.2

Jansen, L. 2007. Deciphering aspects of Azaria Mbatha's worldview located in specific religious themes and images employed in his work. MA Dissertation, University of KwaZulu-Natal, Pietermaritzburg. p.141.

Fig.2.3

Hobbs, P. and Rankin, E. 2003. *Rorke's Drift: Empowering Prints*. Cape Town: DoubleStoreyBooks. p.187.

Fig.2.4

Rankin, E. and Hobbs, P. 1999. Imprinting primitivism: Perceptions and preconceptions of printmaking at Rorke's Drift. *Mots Pluriels*. No. 12 December 1999. [O]. Available: <http://www.arts.uwa.edu.au/MotsPluriels/MP1299r&h.html>
Accessed: 25.10.2010

Fig.2.5

De Jager, E.J. 1992. *Images of Man: Contemporary South African Black Art and Artists*. Alice: Fort Hare University Press. Plate 215.

Fig.2.6

De Jager, E.J. 1992. *Images of Man: Contemporary South African Black Art and Artists*. Alice: Fort Hare University Press. Plate 216.

Fig.2.7

Hobbs, P. (ed). 2006. *Messages and Meaning: The MTN Art Collection*. Johannesburg: David Krut. p.94.

Fig.2.8

The Artchive. [Sa]. Holbein, Hans – The Body of the Dead Christ in the Tomb. [O]. Available: http://www.artchive.com/artchive/H/holbein/christ_entombed.jpg.html
Accessed: 22.11.2010

Fig.2.9

Kleiner, F.S. 2009. *Gardner's Art Through the Ages: A Global History*. Thirteenth Edition. Boston: Thomson Wadsworth. p.576.

Fig.2.10

Klopper, S. 2004. Sacred Fragments: Looking Back at the Art of Paul Stopforth. *African Arts*. Winter 2004. p.71.

Fig.2.11

Hobbs, P. (ed). 2006. *Messages and Meaning: The MTN Art Collection*. Johannesburg: David Krut. p.165.

Fig.2.12

Mason, J, Sassoon, A, Maltz-Leca, L. & McCrickard, K. 2010. *Taxi-015: Paul Stopforth*. Johannesburg: David Krut. p.55

Fig.2.13

Mason, J, Sassoon, A, Maltz-Leca, L. & McCrickard, K. 2010. *Taxi-015: Paul Stopforth*. Johannesburg: David Krut. p.54

Fig.2.14

Mason, J, Sassoon, A, Maltz-Leca, L. & McCrickard, K. 2010. *Taxi-015: Paul Stopforth*. Johannesburg: David Krut. p.53

Fig.2.15

Rankin, E. & von Veh, K. 2008. *Taxi 013: Diane Victor*. Johannesburg: David Krut. p.51.

Fig.2.16

Rankin, E. & von Veh, K. 2008. *Taxi 013: Diane Victor*. Johannesburg: David Krut. p.7

Fig.2.17

Rankin, E. & von Veh, K. 2008. *Taxi 013: Diane Victor*. Johannesburg: David Krut. p.56

Fig.2.18

Rankin, E. & von Veh, K. 2008. *Taxi 013: Diane Victor*. Johannesburg: David Krut. p.57.

Fig.2.19

Heller, E.G. (ed). 2002. *Icons or Portraits?: Images of Jesus and Mary from the Collection of Michael Hall*. Exhibition Catalogue, July 26 - November 16, 2002. New York: The Gallery at the American Bible Society. p.206.

Fig.2.20

Heller, E.G. (ed). 2002. *Icons or Portraits?: Images of Jesus and Mary from the Collection of Michael Hall*. Exhibition Catalogue, July 26 - November 16, 2002. New York: The Gallery at the American Bible Society. p.203.

Fig.2.21

Dixie, C. 1993. *The Gendered Gaze: a graphic interpretation of gender through an examination of the representation of women in biblical texts*. Unpublished documentation and commentary on the body of practical work presented for the degree MAFA at Michaelis School of Fine Art, University of Cape Town. p.69.

Fig.2.22

Dixie, C. 1993. *The Gendered Gaze: a graphic interpretation of gender through an examination of the representation of women in biblical texts*. Unpublished documentation and commentary on the body of practical work presented for the degree MAFA at Michaelis School of Fine Art, University of Cape Town. p.76.

Fig.2.23

Dixie, C. 1993. *The Gendered Gaze: a graphic interpretation of gender through an examination of the representation of women in biblical texts*. Unpublished documentation and commentary on the

body of practical work presented for the degree MAFA at Michaelis School of Fine Art, University of Cape Town. p.74.

Fig.2.24

Dixie, C. 1993. *The Gendered Gaze: a graphic interpretation of gender through an examination of the representation of women in biblical texts.* Unpublished documentation and commentary on the body of practical work presented for the degree MAFA at Michaelis School of Fine Art, University of Cape Town. p.89.

Fig.2.25

Backtoclassics.com. 2009. *Bathsheba at the Bath* by Sebastiano Ricci, 1725. [O]. Available: <http://www.backtoclassics.com/gallery/sebastianoricci/bathshebaatthebath/> Accessed: 22.11.2010

Chapter Three:

Fig.3.1

Kleiner, F.S. 2009. *Gardner's Art Through the Ages: A Global History.* Thirteenth Edition. Boston: Thomson Wadsworth. p.637.

Fig.3.2

Backtoclassics.com. 2009. *Sistine Chapel – The Fall and Expulsion from Garden of Eden* by Michelangelo Buonarroti, 1509-1510. [O]. Available: <http://www.backtoclassics.com/gallery/michelangelo/sistinechapelthefallandexpulsionfromgardenofeden/> Accessed: 22.11.2010

Fig.3.3

Morgan, T. 1994. *Saints: A Visual Almanac of the Virtuous, Pure, Praiseworthy And Good.* San Francisco: Chronicle Books. p.155.

Fig.3.4

Backtoclassics.com. 2009c. *Martyrdom of St Agatha* by Sebastiano Del Piombo, 1520. [O]. Available: <http://www.backtoclassics.com/gallery/sebastianodelpiombo/martyrdomofstagnatha/> Accessed: 22.11.2010

Fig.3.5

Rankin, E. & von Veh, K. 2008. *Taxi 013: Diane Victor.* Johannesburg: David Krut. p.64.

Fig.3.6

Rankin, E. & von Veh, K. 2008. *Taxi 013: Diane Victor.* Johannesburg: David Krut. p.65.

Fig.3.7

Der Kölner Dom. [Sa]. [O]. Available: www.koelner-dom.de/16842.html?&L=1 Accessed: 2.11.2010

Fig.3.8

Heilbrunn Timeline of Art History. 2006. New York: The Metropolitan Museum of Art, 2000. [O].
Available:
<http://www.metmuseum.org/toah/works-of-art/L.58.86,50.180a-c>
Accessed: 2.11.2010

Fig.3.9

Bredell, M. 2009. *Majak Bredell: 2 Exhibitions*. Exhibition Catalogue. Pretoria: Association of Arts and University of Johannesburg. p.20.

Fig.3.10

Bredell, M. 2009. *Majak Bredell: 2 Exhibitions*. Exhibition Catalogue. Pretoria: Association of Arts and University of Johannesburg. p.21.

Fig.3.11

Bredell, M. 2009. *Majak Bredell: 2 Exhibitions*. Exhibition Catalogue. Pretoria: Association of Arts and University of Johannesburg. p.61.

Fig.3.12

Bredell, M. 2009. *Majak Bredell: 2 Exhibitions*. Exhibition Catalogue. Pretoria: Association of Arts and University of Johannesburg. p.60.

Fig.3.13

Michael Stevenson. 2007. Conrad Botes: Tree of Knowledge. [O]. Available:
<http://www.michaelstevenson.com/contemporary/exhibitions/botes/tree.htm>
Accessed: 22.11.2010

Fig.3.14

Murinik, T. 2004. The Gospel of Tracey Rose. *Art South Africa*. Vol.2, Issue 4, Winter 2004. p.33.

Fig.3.15

Phokela, J. 2009. *I Like My Neighbours*. Exhibition Catalogue. Johannesburg: Gallery MOMO and David Krut Publishing. [Sp].

Chapter Four:

Fig.4.1

Kren, E & Marx, D. 2004. Web Gallery of Art. [O]. Available:
<http://www.wga.hu/index1.html>
Accessed: 22.11.2010

Fig.4.2

Kren, E & Marx, D. 2004. Web Gallery of Art. [O]. Available:
<http://www.wga.hu/index1.html>
Accessed: 22.11.2010

Fig.4.3

Kleiner, F.S. 2009. *Gardner's Art Through the Ages: A Global History*. Thirteenth Edition. Boston: Thomson Wadsworth. p.584.

Fig.4.4

The National Gallery. [Sa]. Studying Raphael: copies and prints. [O]. Available:
<http://www.nationalgallery.org.uk/paintings/research/copies-and-prints>
Accessed: 22.11.2010

Fig.4.5

Louvre. 2007. Artworks from the Louvre in high resolution: The Virgin of Chancellor Rolin. [O].
Available:
<http://musee.louvre.fr/zoom/index.html?culturename=en-US&artworkid=16>
Accessed: 22.11.2010

Fig.4.6

Campbell, L. 2004. *Van der Weyden*. London: Chaucer Press. p.51.

Fig.4.7

Tate Collection. 2007. Dante Gabriel Rossetti 1828-1882. [O]. Available:
<http://www.tate.org.uk/servlet/ViewWork?cgroupid=999999961&workid=12802&searchid=10166>
Accessed: 22.11.2010

Fig.4.8

Rankin, E. & von Veh, K. 2008. *Taxi 013: Diane Victor*. Johannesburg: David Krut. p.60.

Fig.4.9

Rankin, E. & von Veh, K. 2008. *Taxi 013: Diane Victor*. Johannesburg: David Krut. p.61.

Fig.4.10

Tate Collection. 2004. Sir John Everett Millais, 1829-1896. [O]. Available:
<http://www.tate.org.uk/servlet/ViewWork?workid=9523>
Accessed: 22.11.2010

Fig.4.11

Beck, J.H. 1999. *Italian Renaissance Painting*. Köln: Könemann. p.377.

Fig.4.12

Beck, J.H. 1999. *Italian Renaissance Painting*. Köln: Könemann. p.377.

Fig.4.13

Beck, J.H. 1999. *Italian Renaissance Painting*. Köln: Könemann. p.407.

Fig.4.14

Rankin, E. & von Veh, K. 2008. *Taxi 013: Diane Victor*. Johannesburg: David Krut. p.69.

Fig.4.15

Begg, E. 1996. *The Cult of the Black Virgin*. London: Penguin Books. Front Cover.

Fig.4.16

Ebertshauser, C, Haag, H, Kirchenberger, J. & Solle, D. 1998. *Mary: Art, Culture, and Religion through the Ages*. Transl. P. Heinegg. New York: Crossroad. p.205.

Fig.4.17

Ebertshauser, C, Haag, H, Kirchenberger, J. & Solle, D. 1998. *Mary: Art, Culture, and Religion through the Ages*. Transl. P. Heinegg. New York: Crossroad. p.205.

Fig.4.18

Ebertshauser, C, Haag, H, Kirchenberger, J. & Solle, D. 1998. *Mary: Art, Culture, and Religion through the Ages*. Transl. P. Heinegg. New York: Crossroad. p.205.

Fig.4.19

Bredell, M. 2009. *Majak Bredell: 2 Exhibitions*. Exhibition Catalogue. Pretoria: Association of Arts and University of Johannesburg. p.49.

Fig.4.20

Bredell, M. 2009. *Majak Bredell: 2 Exhibitions*. Exhibition Catalogue. Pretoria: Association of Arts and University of Johannesburg. p.34.

Fig.4.21

Bredell, M. 2009. *Majak Bredell: 2 Exhibitions*. Exhibition Catalogue. Pretoria: Association of Arts and University of Johannesburg. p.63.

Fig.4.22

Bredell, M. 2009. *Majak Bredell: 2 Exhibitions*. Exhibition Catalogue. Pretoria: Association of Arts and University of Johannesburg. p.64.

Fig.4.23

Bredell, M. 2009. *Majak Bredell: 2 Exhibitions*. Exhibition Catalogue. Pretoria: Association of Arts and University of Johannesburg. pp.56,57.

Fig.4.24

Bredell, M. 2009. *Majak Bredell: 2 Exhibitions*. Exhibition Catalogue. Pretoria: Association of Arts and University of Johannesburg. p.54.

Fig.4.25

Bredell, M. 2009. *Majak Bredell: 2 Exhibitions*. Exhibition Catalogue. Pretoria: Association of Arts and University of Johannesburg. p.50.

Fig.4.26

Virtual Uffizi. [Sa]. Virtual Uffizi, Florence: The Complete Catalogue. [O].
Available:
http://www.virtualuffizi.com/uffizi1/Uffizi_Pictures.asp?Contatore=63
Accessed: 22.11.2010

Fig.4.27

Wikimedia Commons. [Sa]. Master of San Martino. [O].
Available:http://commons.wikimedia.org/wiki/File:Master_of_san_martino_Madonna_with_Child_san_matteo_pisa.jpg
Accessed: 7.6.2011

Fig.4.28

Murini, T. 2004. The Gospel of Tracey Rose. *Art South Africa*. Vol.2, Issue 4, Winter 2004. p.30.

Fig.4.29

Murinik, T. 2004. The Gospel of Tracey Rose. *Art South Africa*. Vol.2, Issue 4, Winter 2004. p.36.

Fig.4.30

Bedford, E. (ed). 2003. *Fresh: Tracey Rose*. Cape Town: Iziko: South African National Gallery. p.24.

Fig.4.31

Bedford, E. (ed). 2003. *Fresh: Tracey Rose*. Cape Town: Iziko: South African National Gallery. p.24.

Fig.4.32

Bedford, E. (ed). 2003. *Fresh: Tracey Rose*. Cape Town: Iziko: South African National Gallery. p.21.

Fig.4.33

Bedford, E. (ed). 2003. *Fresh: Tracey Rose*. Cape Town: Iziko: South African National Gallery. p.30.

Fig.4.34

Bedford, E. (ed). 2003. *Fresh: Tracey Rose*. Cape Town: Iziko: South African National Gallery. p.20.

Fig.4.35

Bedford, E. (ed). 2003. *Fresh: Tracey Rose*. Cape Town: Iziko: South African National Gallery. p.21.

Fig.4.36

Bedford, E. (ed). 2003. *Fresh: Tracey Rose*. Cape Town: Iziko: South African National Gallery. p.20.

Fig.4.37

Bedford, E. (ed). 2003. *Fresh: Tracey Rose*. Cape Town: Iziko: South African National Gallery. p.31.

Fig.4.38

Murinik, T. 2004. The Gospel of Tracey Rose. *Art South Africa*. Vol.2, Issue 4, Winter 2004. p.31.

Fig.4.39

Web Gallery of Art. [Sa]. [O]. Available:

<http://www.wga.hu/frames-e.html?html/a/angelico/11/index.html>

Accessed: 8.11.2010

Fig.4.40

Murinik, T. 2004. The Gospel of Tracey Rose. *Art South Africa*. Vol.2, Issue 4, Winter 2004. p.32.

Fig.4.41

Murinik, T. 2004. The Gospel of Tracey Rose. *Art South Africa*. Vol.2, Issue 4, Winter 2004. p.32.

Fig.4.42

Schmahmann, B. 2007. Figuring Maternity: Christine Dixie's *Parturient Prospects*. *De Arte*. No.75. p.28.

Fig.4.43

Schmahmann, B. 2007. Figuring Maternity: Christine Dixie's *Parturient Prospects*. *De Arte*. No.75. p.29.

Fig.4.44

Schmahmann, B. 2007. Figuring Maternity: Christine Dixie's *Parturient Prospects*. *De Arte*. No.75. p.36.

Fig.4.45

Musee d'Orsay. [Sa]. [O]. Available:

[http://www.musee-orsay.fr/en/collections/works-in-](http://www.musee-orsay.fr/en/collections/works-in-focus/search.html?no_cache=1&zoom=1&tx_damzoom_pi1[showUid]=2021)

[focus/search.html?no_cache=1&zoom=1&tx_damzoom_pi1\[showUid\]=2021](http://www.musee-orsay.fr/en/collections/works-in-focus/search.html?no_cache=1&zoom=1&tx_damzoom_pi1[showUid]=2021)

Accessed: 8.11.2010

Fig.4.46

Schmahmann, B. 2007. Figuring Maternity: Christine Dixie's *Parturient Prospects*. *De Arte*. No.75. p.37.

Fig.4.47

Image courtesy of the artist.

Fig.4.48

Schmahmann, B. 2007. Figuring Maternity: Christine Dixie's *Parturient Prospects*. *De Arte*. No.75. p.38.

Fig.4.49

Photograph by Bengt von Veh.

Fig.4.50

Photograph by Bengt von Veh.

Fig.4.51

Photograph by Bengt von Veh.

Fig.4.52

Photograph by Bengt von Veh.

Fig.4.53

Photograph by Bengt von Veh.

Fig.4.54

Photograph by Bengt von Veh.

Fig.4.55

Schmahmann, B. 2007. Figuring Maternity: Christine Dixie's *Parturient Prospects*. *De Arte*. No.75. p.29.

Fig.4.56

Perryer, S. (ed). 2005. *Wim Botha*. Exhibition Catalogue. Cape Town: Standard Bank and Michael Stevenson. p.26,27.

Fig.4.57

Finnan, V. 2008. *Michelangelo Sculptures*. [O]. Available:

<http://www.italian-renaissance-art.com/Michelangelo-sculptures.html>

Accessed: 22.11.2010

Fig.4.58

Perryer, S. (ed). 2005. *Wim Botha*. Exhibition Catalogue. Cape Town: Standard Bank and Michael Stevenson. p.47.

Fig.4.59

Michael Stevenson. 2006. Wim Botha: Apocalumbilicus. [O]. Available:
<http://www.michaelstevenson.com/contemporary/exhibitions/botha/apocalagnosia/apocalumbilicus.htm>
Accessed: 22.11.2010

Fig.4.60

Pain, S. 2010. *The Legacy of Joseph Beuys*. [O]. Available:
<http://www.escapeintolife.com/essays/legacy-joseph-beuys/>
Accessed: 22.11.2010

Fig.4.61

CCCB. 2010. *Centre De Cultura Contemporania De Barcelona*. [O]. Available:
<http://www.cccb.org/en/album.php?idg=13355>
Accessed: 1.3.2010

Chapter Five:

Fig.5.1

Catholic Gifts. [Sa]. [O]. Available:
<https://www.giftscatholic.com/item/Arch-Wood-Icon-Sacred-Heart-of-Jesus-1117.html?cd=jk3qhod1hf4e0ropf0rj4e4sv3>
Accessed: 8.11.2010

Fig.5.2

Finaldi, G. 2000. *The Image of Christ*. London: National Gallery. Image 41.

Fig.5.3

Finaldi, G. 2000. *The Image of Christ*. London: National Gallery. Image 34.

Fig.5.4

Rankin, E. & von Veh, K. 2008. *Taxi 013: Diane Victor*. Johannesburg: David Krut. p.58.

Fig.5.5

Kleiner, F.S. 2009. *Gardner's Art Through the Ages: A Global History*. Thirteenth Edition. Boston: Thomson Wadsworth. p.589.

Fig.5.6

Steinberg, L. 1996. *The Sexuality of Christ in Renaissance Art and in Modern Oblivion*. (2nd Edition, revised and expanded). First published in 1983. Chicago and London: University of Chicago Press. p.20.

Fig.5.7

Rankin, E. & von Veh, K. 2008. *Taxi 013: Diane Victor*. Johannesburg: David Krut. p.61.

Fig.5.8

Perryer, S. (ed). 2005. *Wim Botha*. Exhibition Catalogue. Cape Town: Standard Bank and Michael Stevenson. p.19.

Fig.5.9

Perryer, S. (ed). 2005. *Wim Botha*. Exhibition Catalogue. Cape Town: Standard Bank and Michael Stevenson. p.20.

Fig.5.10

Perryer, S. (ed). 2005. *Wim Botha*. Exhibition Catalogue. Cape Town: Standard Bank and Michael Stevenson. p.23.

Fig.5.11

Perryer, S. (ed). 2005. *Wim Botha*. Exhibition Catalogue. Cape Town: Standard Bank and Michael Stevenson. p.22.

Fig.5.12

Perryer, S. (ed). 2005. *Wim Botha*. Exhibition Catalogue. Cape Town: Standard Bank and Michael Stevenson. p.54.

Fig.5.13

Michael Stevenson. 2006. *Wim Botha*. Scapegoat. [O]. Available:
<http://www.stevenson.info/exhibitions/botha/sbya/sbya1.htm>.
Accessed: 2.6.2011

Fig.5.14

Michael Stevenson. 2005. *Wim Botha*. Cold Fusion: Gods, heroes and martyrs. [O]. Available:
http://www.stevenson.info/exhibitions/botha/cold_fusion/cold_fusion.htm
Accessed: 13.6.2011

Fig.5.15

Gurney, K. 2005. *Wim Botha at Michael Stevenson Contemporary*. In *Artthrob* Issue No. 92, April 2005. [O]. Available:
<http://www.artthrob.co.za/05apr/reviews/msc.html>
Accessed: 23.11.2010

Fig.5.16

Courtesy of Michael Stevenson Gallery.

Fig.5.17

Perryer, S. (ed). 2005. *Wim Botha*. Exhibition Catalogue. Cape Town: Standard Bank and Michael Stevenson.

Fig.5.18

Gurney, K. 2005. *Wim Botha at Michael Stevenson Contemporary*. In *Artthrob* Issue No. 92, April 2005. [O]. Available:
<http://www.artthrob.co.za/05apr/reviews/msc.html>
Accessed: 23.11.2010

Fig.5.19

Kannemeyer, A. & Botes, C. 2006. *The Big Bad Bitterkomix Handbook*. Johannesburg: Jacana. p.24.

Fig.5.20

Kannemeyer, A. & Botes, C. 2006. *The Big Bad Bitterkomix Handbook*. Johannesburg: Jacana. p.195.

Fig.5.21

Kannemeyer, A. & Botes, C. 2006. *The Big Bad Bitterkomix Handbook*. Johannesburg: Jacana. p.198.

Fig.5.22

Prepare For Mass. 2008. The Solemnity of our Lord Jesus Christ the King. [O] Available:
<http://prepareformass.wordpress.com/2008/11/16/the-solemnity-of-our-lord-jesus-christ-the-king/>
Accessed: 13.6.2011

Fig.5.23

Kannemeyer, A. & Botes, C. 2006. *The Big Bad Bitterkomix Handbook*. Johannesburg: Jacana. p.209.

Fig.5.24

Courtesy of Conrad Botes.

Fig.5.25

Courtesy of Michael Stevenson Gallery.

Fig.5.26

Courtesy of Michael Stevenson Gallery.

Fig.5.27

Kleiner, F.S. 2009. *Gardner's Art Through the Ages: A Global History*. Thirteenth Edition. Boston: Thomson Wadsworth. p.582.

Fig.5.28

O'Toole, S. 2007. Up and Under. *Art South Africa*. Vol.5 no.4 May 2007. [O]. Available:
<http://www.artsouthafrica.com/?article=206>
Accessed: 28.4.2010

Fig.5.29

Brodie/Stevenson. 2008. *Lawrence Lemaoana: Fortune Telling in Black, Red and White*. [O]. Available:
<http://www.brodiestevenson.com/exhibitions/lemaoana/index.htm>
Accessed: 29.4.2010

Fig.5.30

Brodie/Stevenson. 2008. *Lawrence Lemaoana: Fortune Telling in Black, Red and White*. [O]. Available:
<http://www.brodiestevenson.com/exhibitions/lemaoana/index.htm>
Accessed: 29.4.2010

Fig.5.31

O'Toole, S. 2007. Up and Under. *Art South Africa*. Vol.5 no.4 May 2007. [O]. Available:
<http://www.artsouthafrica.com/?article=206>
Accessed: 28.4.2010

Chapter Six:

Fig.6.1

Perryer, S. (ed). 2005. *Wim Botha*. Exhibition Catalogue. Cape Town: Standard Bank and Michael Stevenson. p.57.

Fig.6.2

Perryer, S. (ed). 2005. *Wim Botha*. Exhibition Catalogue. Cape Town: Standard Bank and Michael Stevenson. p.56.

Fig.6.3

de la Croix, H. & Tansey, R.G. (eds). 1970. *Gardner's Art Through the Ages*. Fifth Edition. New York, Chicago, San Francisco and Atlanta: Harcourt, Brace and World, Inc. Plate 14-3.

Fig.6.4

Beks, M. 1994. *Hieronymus Bosch*. London: Grange Books PLC. p.34.

Fig.6.5

Beks, M. 1994. *Hieronymus Bosch*. London: Grange Books PLC. p.34.

Fig.6.6

The trial of Abraham / L'épreuve d'Abraham / 15 Ghiberti Sacrifice of Isaac. [O]. Available: http://www.artbible.net/1T/Gen2201_abraham_sacrifice/pages/15%20GHIBERTI%20SACRIFICE%20OF%20ISAAC.htm
Accessed: 1.6.2011

Fig.6.7

Scanopia.com. [Sa]. [O]. Available: <http://www.scanopia.com/donatello/the-sacrifice-of-isaac-440.jpg>
Accessed: 1.6.2011

Fig.6.8

Tuchman, P. 1983. *George Segal*. New York and London: Abbeville Press. p.88.

Fig.6.9

Tuchman, P. 1983. *George Segal*. New York and London: Abbeville Press. p.94.

Fig.6.10

Dixie, C. 2010. The Binding. *Gallery AOP*. [O]. Available: <http://artonpaper.co.za/view.asp?ItemID=40&tname=tblComponent1&oname=exhibitions&pg=front&app=&subm=&imgTCpage=1&imgSCount=0>
Accessed: 24.8.2010

Fig.6.11

Dixie, C. 2010. The Binding. *Gallery AOP*. [O]. Available: <http://artonpaper.co.za/view.asp?ItemID=40&tname=tblComponent1&oname=exhibitions&pg=front&app=&subm=&imgTCpage=1&imgSCount=0>
Accessed: 24.8.2010

Fig.6.12

Dixie, C. 2010. The Binding. *Gallery AOP*. [O]. Available:
<http://artonpaper.co.za/view.asp?ItemID=40&tname=tblComponent1&oname=exhibitions&pg=front&app=&subm=&imgTCpage=1&imgSCount=0>
Accessed: 24.8.2010

Fig.6.13

Dixie, C. 2010. The Binding. *Gallery AOP*. [O]. Available:
<http://artonpaper.co.za/view.asp?ItemID=40&tname=tblComponent1&oname=exhibitions&pg=front&app=&subm=&imgTCpage=1&imgSCount=0>
Accessed: 24.8.2010

Fig.6.14

Dixie, C. 2010. The Binding. *Gallery AOP*. [O]. Available:
<http://artonpaper.co.za/view.asp?ItemID=40&tname=tblComponent1&oname=exhibitions&pg=front&app=&subm=&imgTCpage=1&imgSCount=0>
Accessed: 24.8.2010

Fig.6.15

Dixie, C. 2010. The Binding. *Gallery AOP*. [O]. Available:
<http://artonpaper.co.za/view.asp?ItemID=40&tname=tblComponent1&oname=exhibitions&pg=front&app=&subm=&imgTCpage=1&imgSCount=0>
Accessed: 24.8.2010

Fig.6.16

Dixie, C. 2010. The Binding. *Gallery AOP*. [O]. Available:
<http://artonpaper.co.za/view.asp?ItemID=40&tname=tblComponent1&oname=exhibitions&pg=front&app=&subm=&imgTCpage=1&imgSCount=0>
Accessed: 24.8.2010

Fig.6.17

Dixie, C. 2010. The Binding. *Gallery AOP*. [O]. Available:
<http://artonpaper.co.za/view.asp?ItemID=40&tname=tblComponent1&oname=exhibitions&pg=front&app=&subm=&imgTCpage=1&imgSCount=0>
Accessed: 24.8.2010

Fig.6.18

Dixie, C. 2010. The Binding. *Gallery AOP*. [O]. Available:
<http://artonpaper.co.za/view.asp?ItemID=40&tname=tblComponent1&oname=exhibitions&pg=front&app=&subm=&imgTCpage=1&imgSCount=0>
Accessed: 24.8.2010

Fig.6.19

Dixie, C. 2010. The Binding. *Gallery AOP*. [O]. Available:
<http://artonpaper.co.za/view.asp?ItemID=40&tname=tblComponent1&oname=exhibitions&pg=front&app=&subm=&imgTCpage=1&imgSCount=0>
Accessed: 24.8.2010

Fig.6.20

Dixie, C. 2010. The Binding. *Gallery AOP*. [O]. Available:
<http://artonpaper.co.za/view.asp?ItemID=40&tname=tblComponent1&oname=exhibitions&pg=front&app=&subm=&imgTCpage=1&imgSCount=0>
Accessed: 24.8.2010

Fig.6.21

Perryer, S. (ed). 2009. *Conrad Botes: Cain and Abel*. Catalogue no.40. For the Exhibition at Michael Stevenson Gallery, 15 January – 21 February 2009. Cape Town: Michael Stevenson. pp.8,9.

Fig.6.22

Perryer, S. (ed). 2009. *Conrad Botes: Cain and Abel*. Catalogue no.40. For the Exhibition at Michael Stevenson Gallery, 15 January – 21 February 2009. Cape Town: Michael Stevenson. p.10.

Fig.6.23

Perryer, S. (ed). 2009. *Conrad Botes: Cain and Abel*. Catalogue no.40. For the Exhibition at Michael Stevenson Gallery, 15 January – 21 February 2009. Cape Town: Michael Stevenson. p.12,13.

Fig.6.24

Perryer, S. (ed). 2009. *Conrad Botes: Cain and Abel*. Catalogue no.40. For the Exhibition at Michael Stevenson Gallery, 15 January – 21 February 2009. Cape Town: Michael Stevenson. p.23.

Fig.6.25

Perryer, S. (ed). 2009. *Conrad Botes: Cain and Abel*. Catalogue no.40. For the Exhibition at Michael Stevenson Gallery, 15 January – 21 February 2009. Cape Town: Michael Stevenson. p.34,35.

Fig.6.26

Wedgwood, C.V. and the Editors of Time-Life Books. 1973. *The World of Rubens, 1577-1640*. [SI]: Time-Life International. p.50.

Fig.6.27

Howe, J. 1997. A Digital Archive of Architecture. *Boston College*. [O]. Available:
http://www.bc.edu/bc_org/avp/cas/fnart/arch/romanesque_arch.html
Accessed: 2.12.2010

Fig.6.28

Rankin, E. & von Veh, K. 2008. *Taxi 013: Diane Victor*. Johannesburg: David Krut. p.62.

Fig.6.29

Rankin, E. & von Veh, K. 2008. *Taxi 013: Diane Victor*. Johannesburg: David Krut. p.85.

Fig.6.30

Von Veh, K. 2007. Considerations on the Sasol Wax Art Awards 2006. *De Arte*. Vol.75. p.66.

Fig.6.31

Rankin, E. & von Veh, K. 2008. *Taxi 013: Diane Victor*. Johannesburg: David Krut. p.86.

Fig.6.32

Rankin, E. & von Veh, K. 2008. *Taxi 013: Diane Victor*. Johannesburg: David Krut. p.87.

Fig.6.33

Rankin, E. & von Veh, K. 2008. *Taxi 013: Diane Victor*. Johannesburg: David Krut. p.88.

Fig.6.34

Rankin, E. & von Veh, K. 2008. *Taxi 013: Diane Victor*. Johannesburg: David Krut. pp.39-41.

Fig.6.35

Image courtesy of Diane Victor.

Fig.6.36

Image courtesy of Diane Victor.

Fig.6.37

Michael C. Carlos Museum: Permanent Collection: Sub Saharan African Art. [O]. Available:
<http://carlos.emory.edu/COLLECTION/AFRICA/africa02.html>
Accessed: 13.6.2011

Fig.6.38

Image courtesy of Diane Victor.

Fig.6.39

Beck, J.H. 1999. *Italian Renaissance Painting*. Köln: Könemann. p.390.

Fig.6.40

Rankin, E. & von Veh, K. 2008. *Taxi 013: Diane Victor*. Johannesburg: David Krut. p.41.

Fig.6.41

Beck, J.H. 1999. *Italian Renaissance Painting*. Köln: Könemann. p.217.

Fig.6.42

Shelton, A. (ed). 1995. *Fetishism: Visualising Power and Desire*. London: The South Bank Centre and the Royal Pavilion, Art Gallery and Museums, with Lund Humphries. p.55.

Fig.6.43

Rankin, E. & von Veh, K. 2008. *Taxi 013: Diane Victor*. Johannesburg: David Krut. 36.

Conclusion:

Fig.7.1

Image courtesy of the Goodman Gallery.

