



Plate 1.1 ECM fungal species as identified from sporocarp collections associated with *Pinus* in Mpumalanga and the Eastern Cape, South Africa



Plate 1.2 ECM fungal species as identified from sporocarp collections associated with *Pinus* in Mpumalanga and the Eastern Cape, South Africa

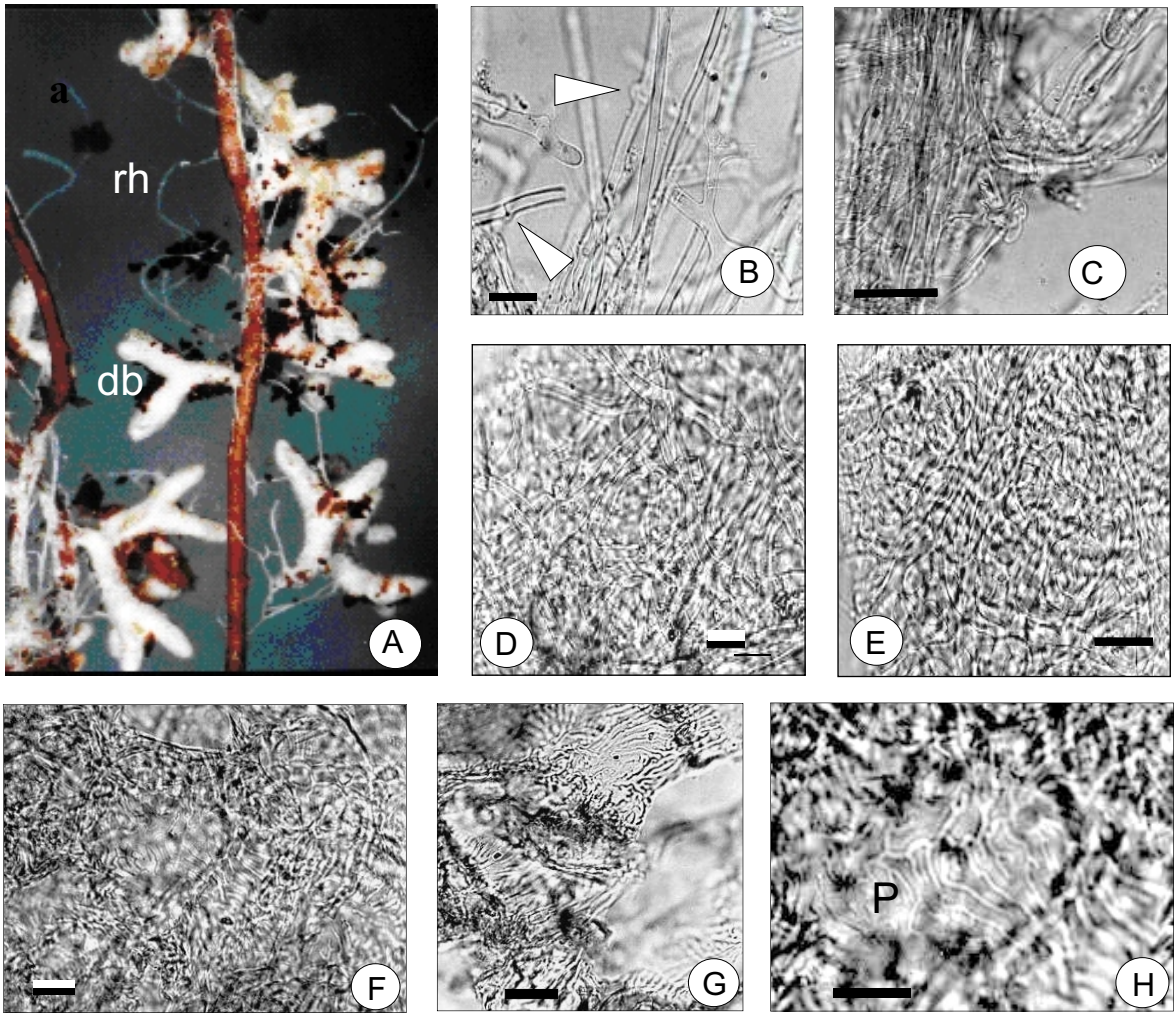


Plate 2 Photographic presentation of ECM morphotype 'White': morphological and anatomical characteristics

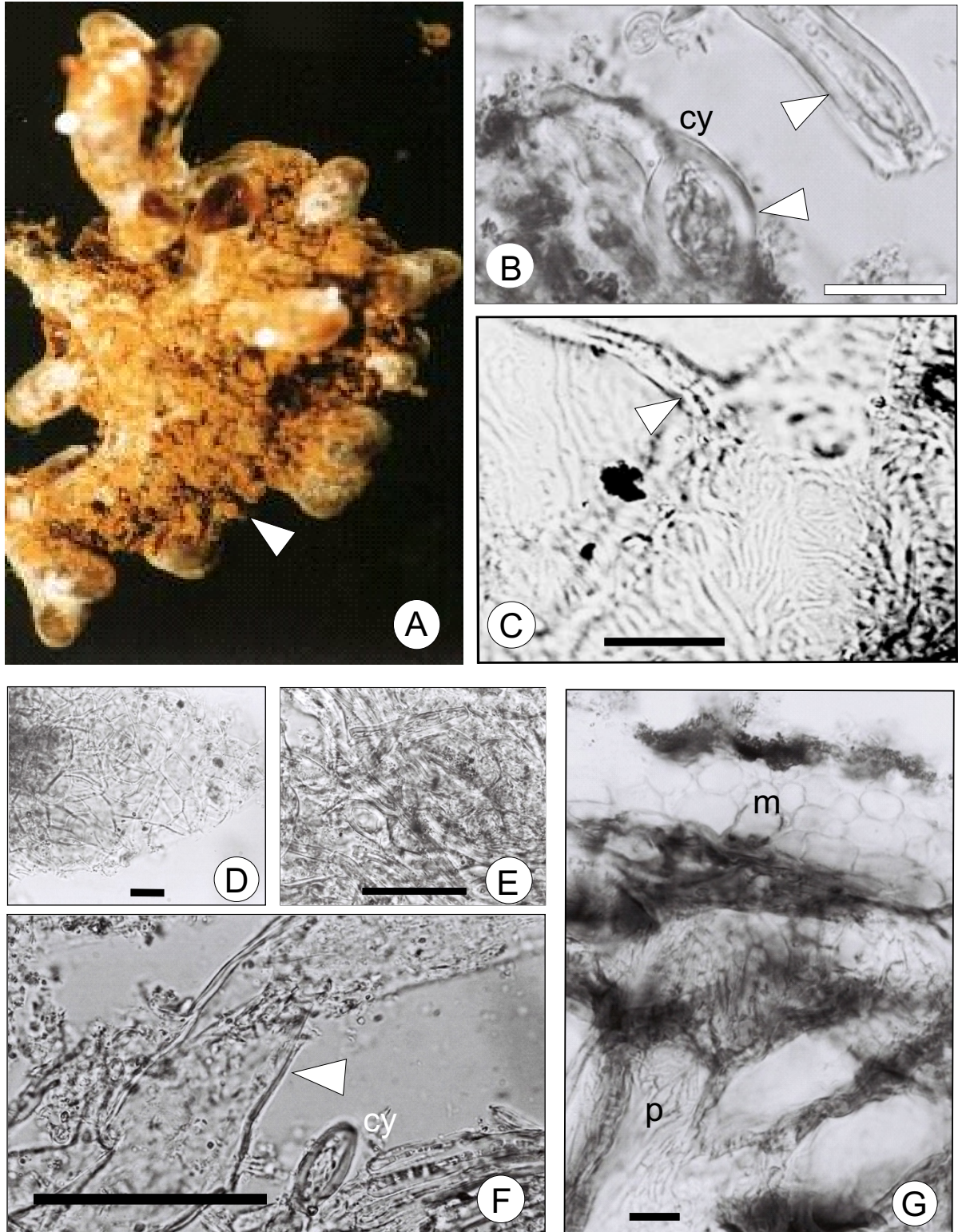
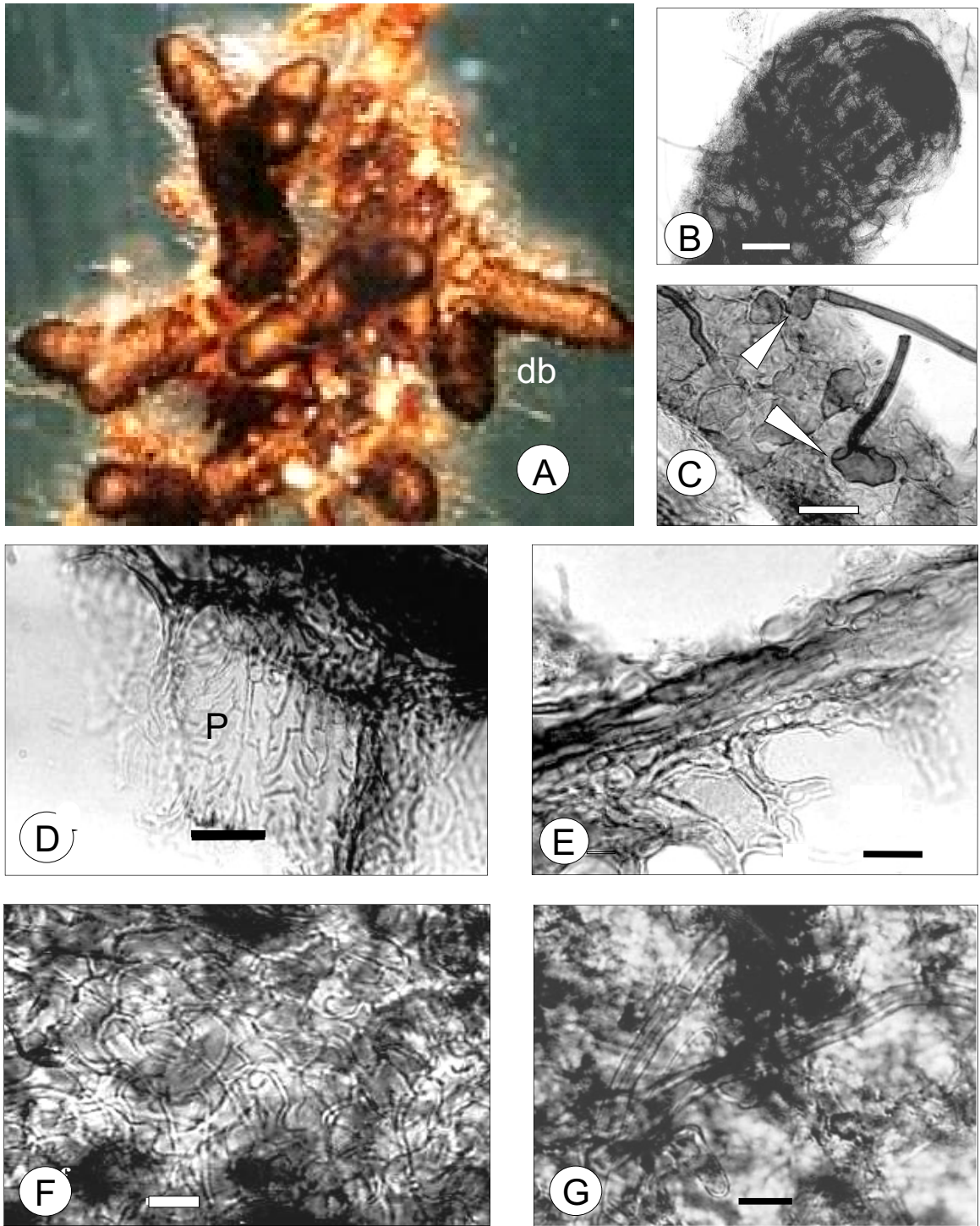


Plate 3 Photographic presentation of ECM morphotype 'BSY': morphological and anatomical characteristics



**Plate 4 Photographic presentation of ECM morphotype 'Black':
morphological and anatomical characteristics**

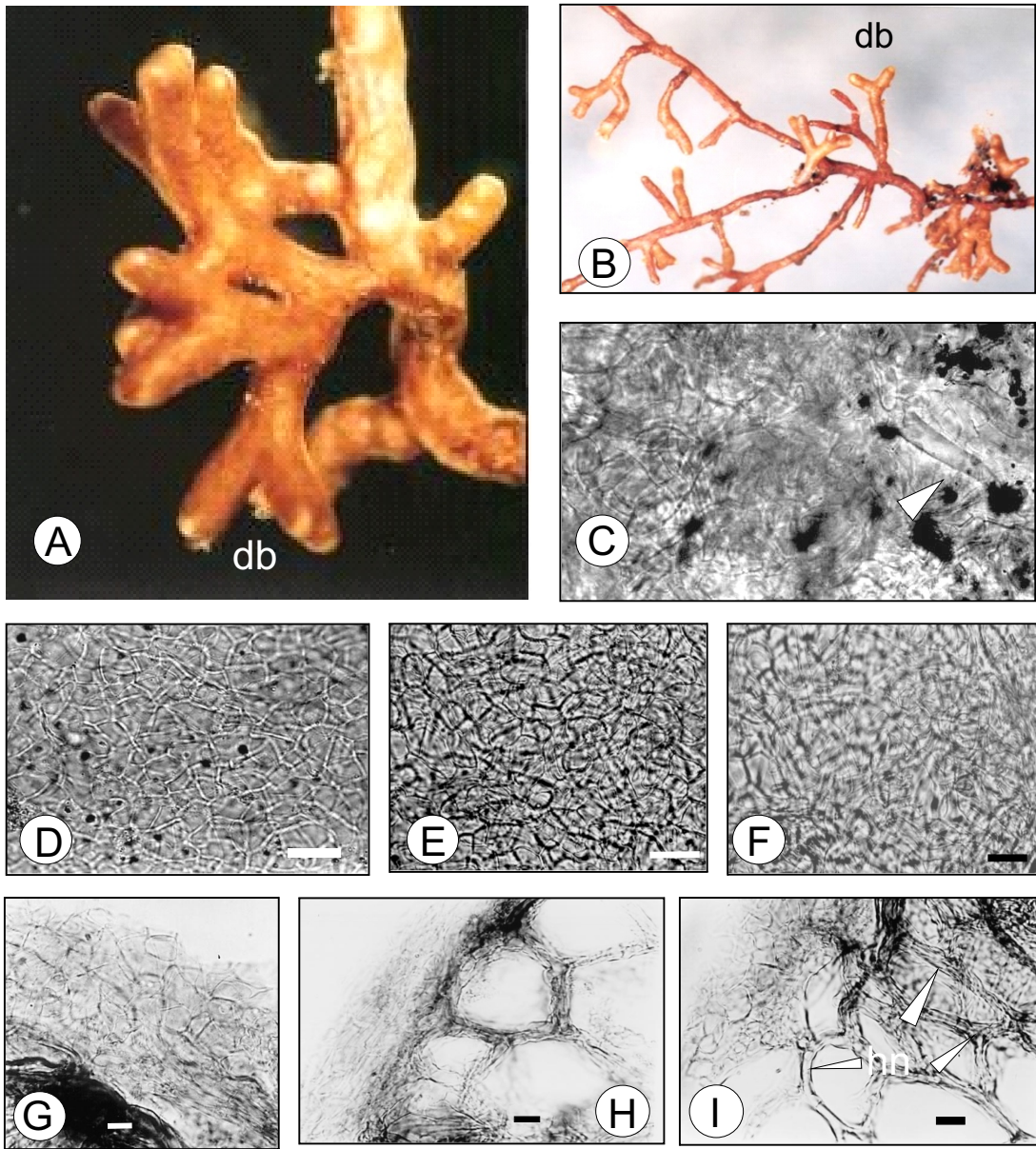


Plate 5 Photographic presentation of ECM morphotype 'Orange': morphological and anatomical characteristics

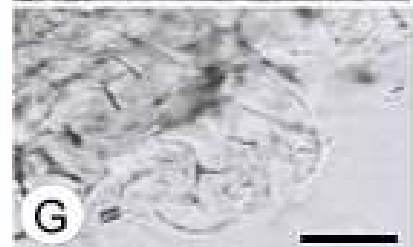
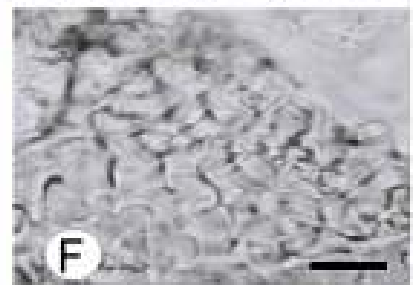
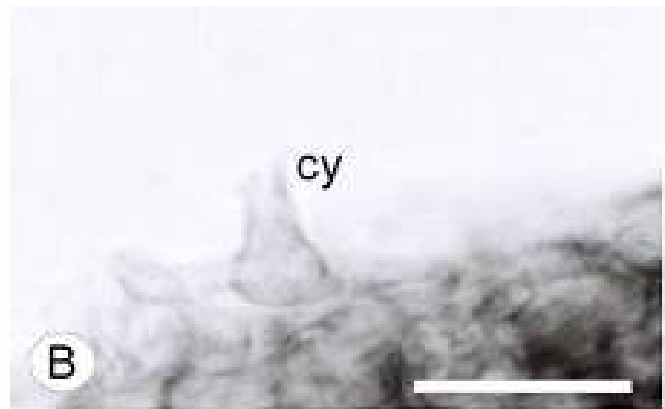
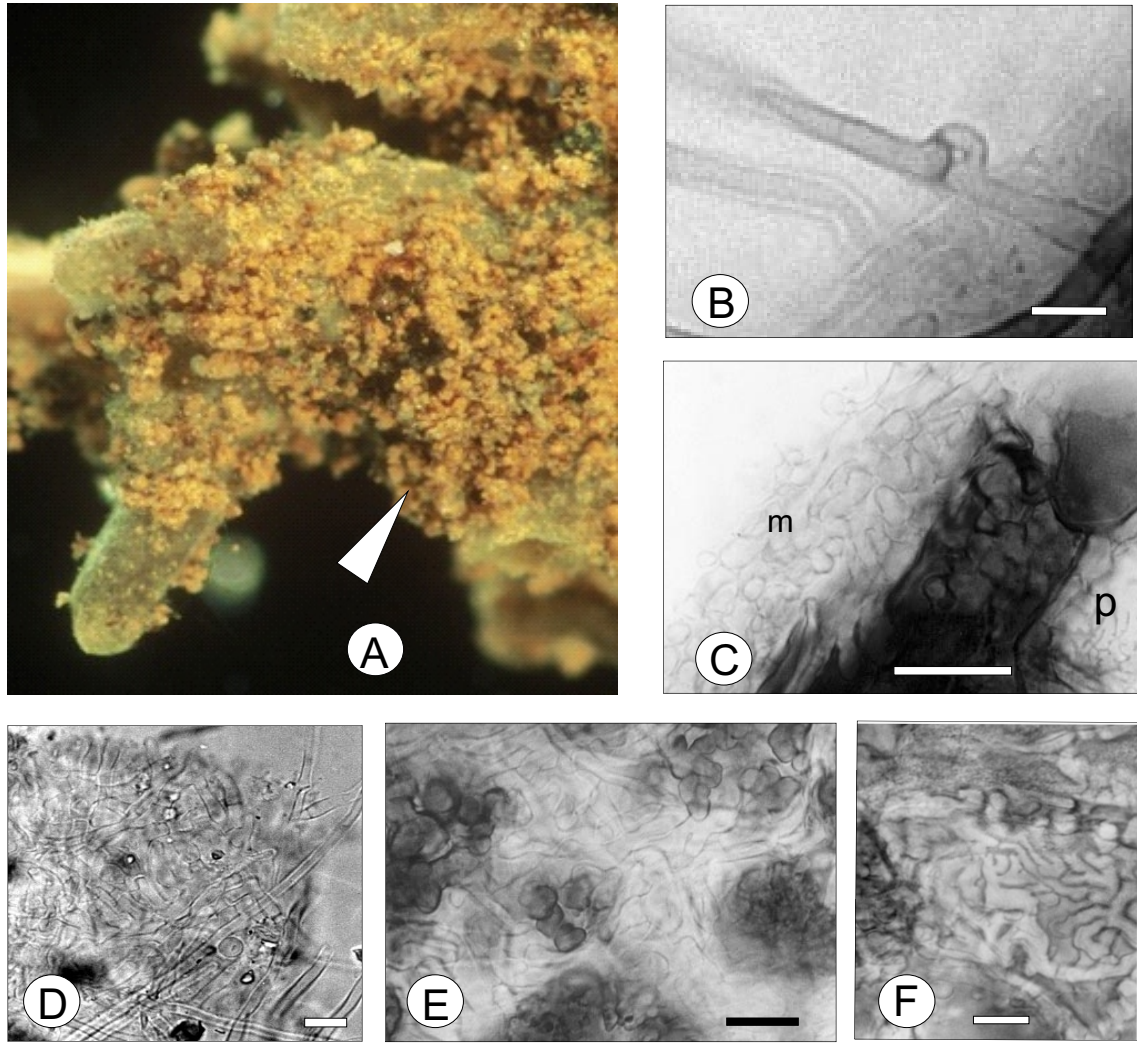
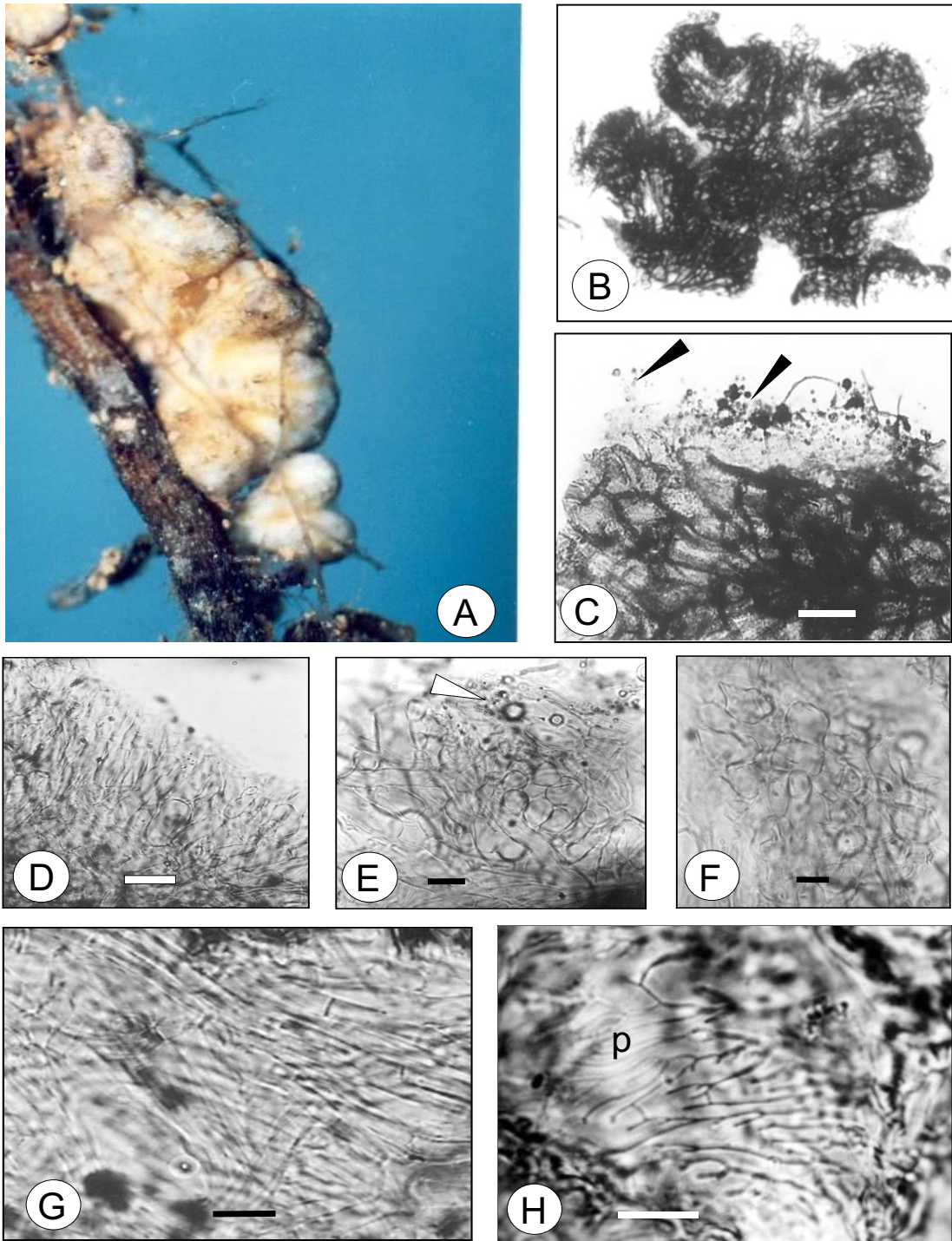


Plate 6 Photographic presentation of ECM morphotype 'Yelsil': morphological and anatomical characteristics



**Plate 7 Photographic presentation of ECM morphotype 'Grey':
morphological and anatomical characteristics**



**Plate 8 Photographic presentation of ECM morphotype 'Tuber':
morphological and anatomical characteristics**