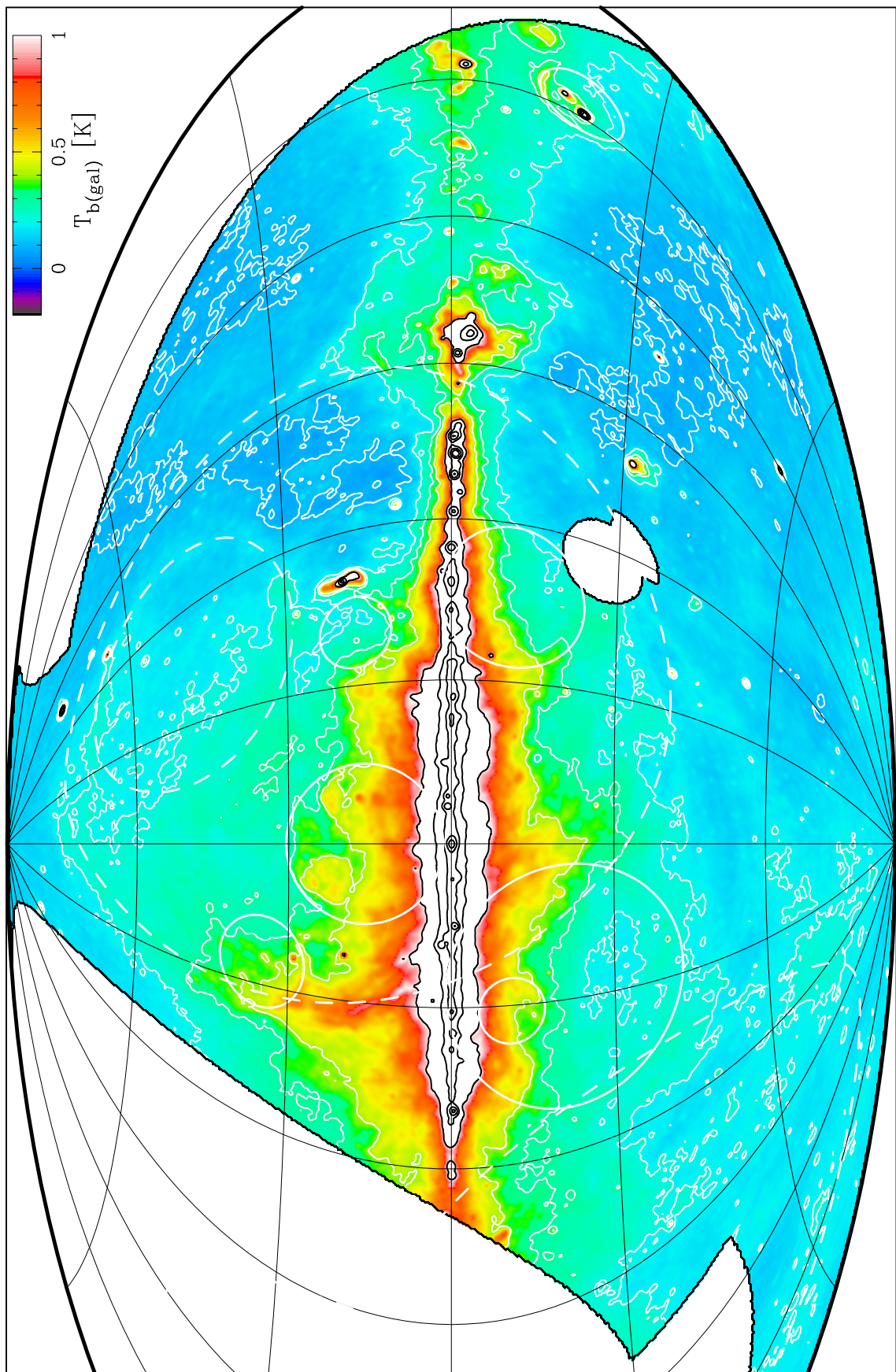


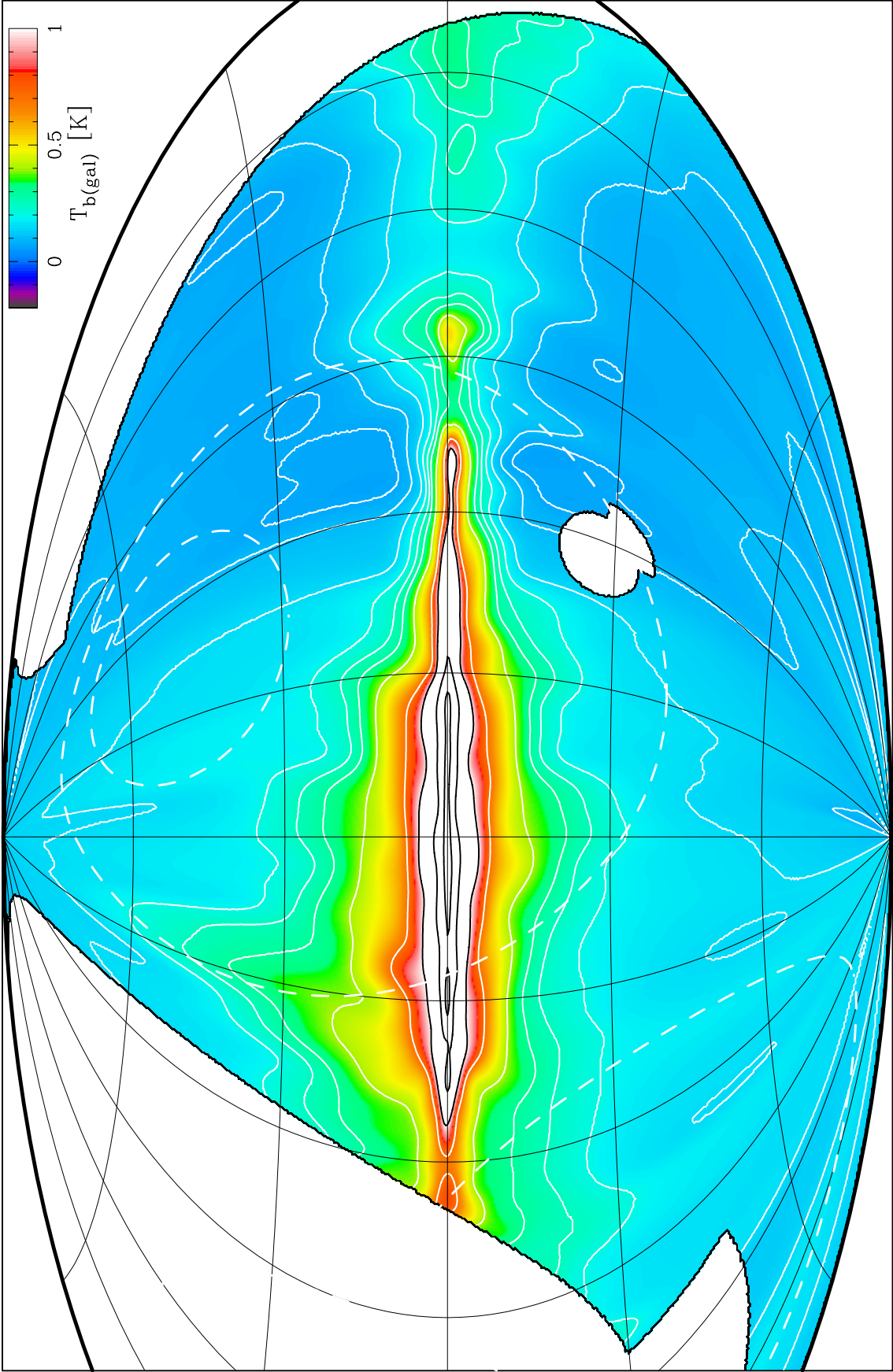
Original 2326 MHz Map

Plate C.1



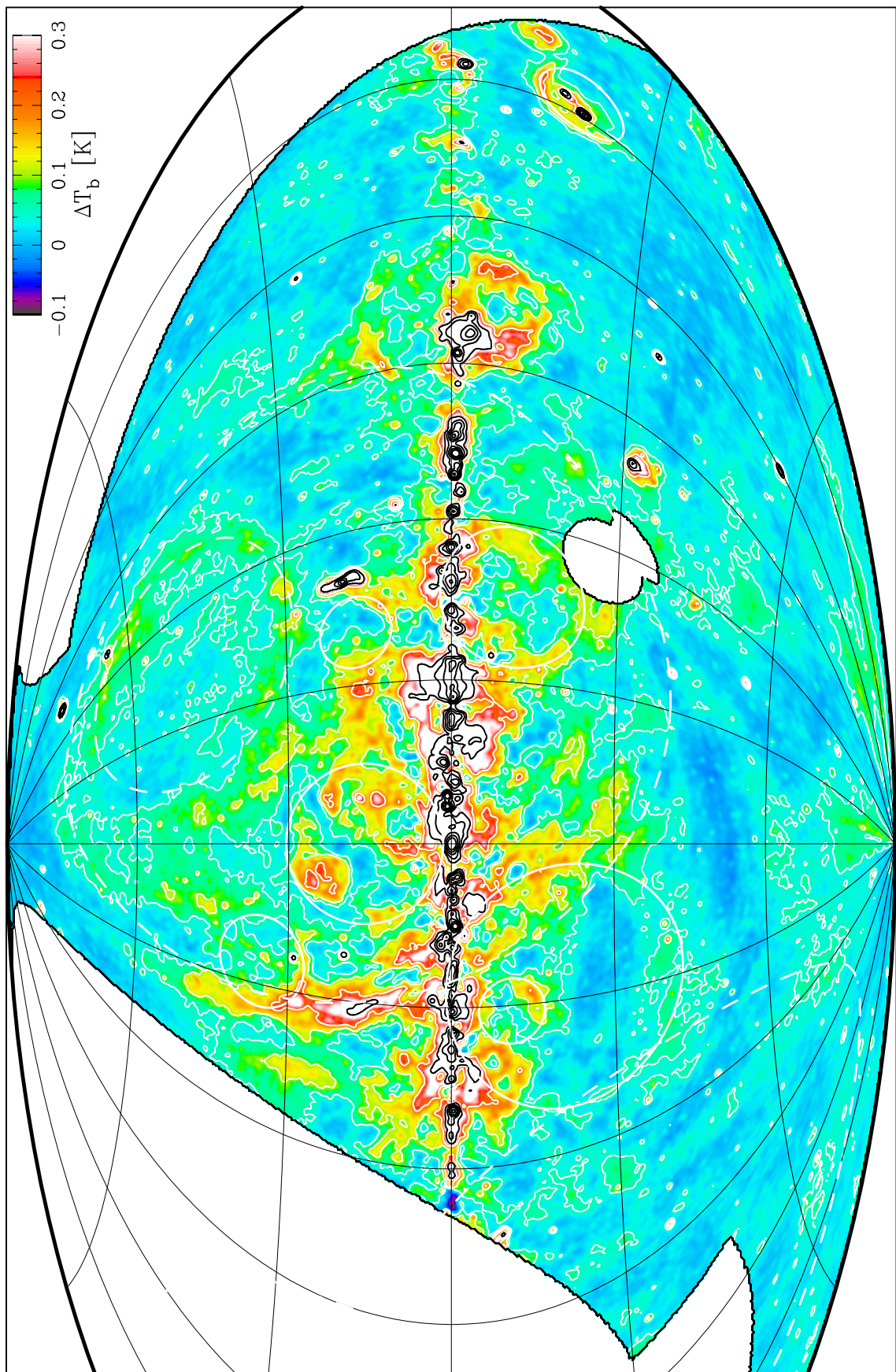
Diffuse Background Map (2326 MHz)

Plate C.2



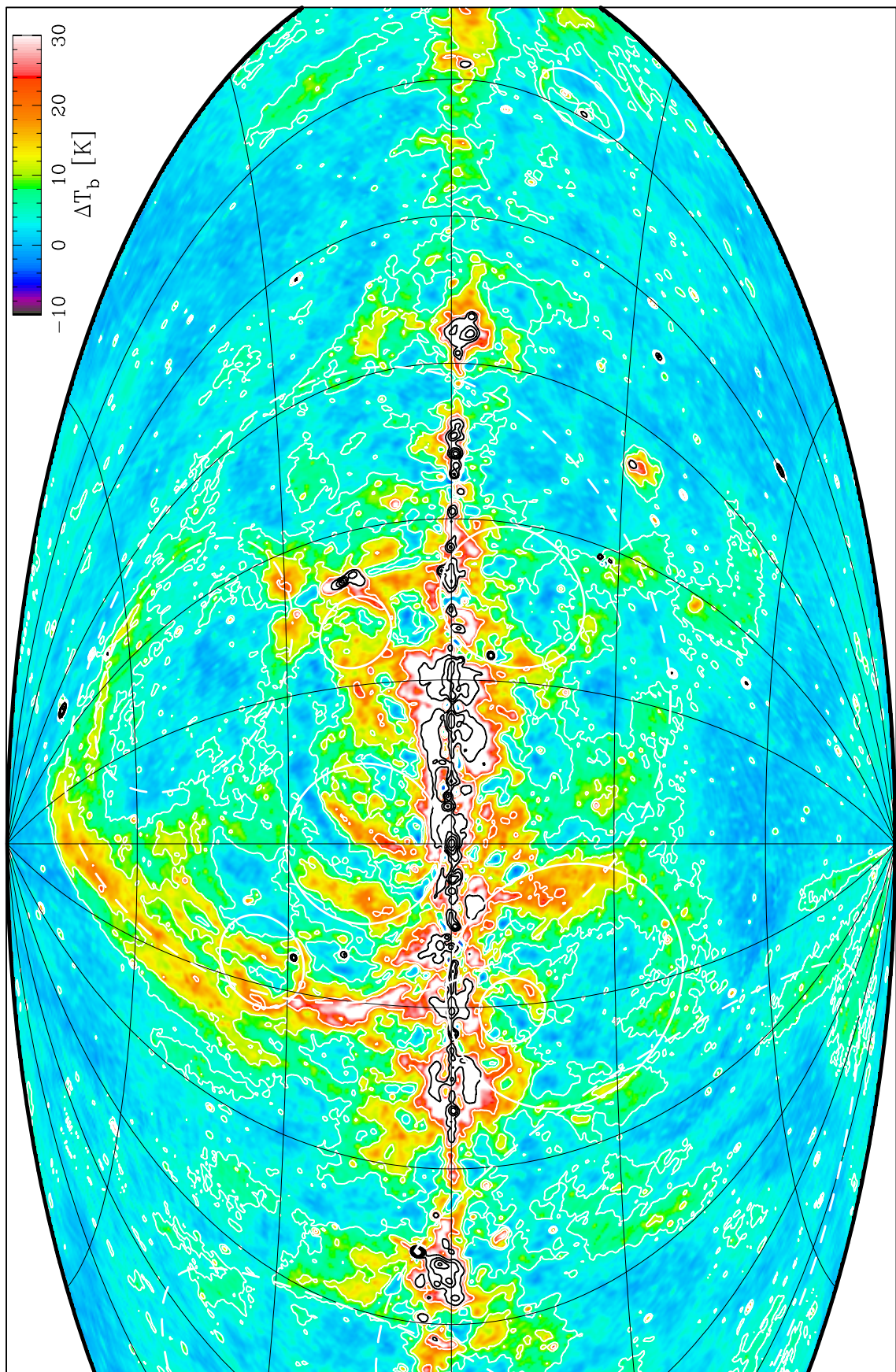
Residual 2326 MHz Map

Plate C.3



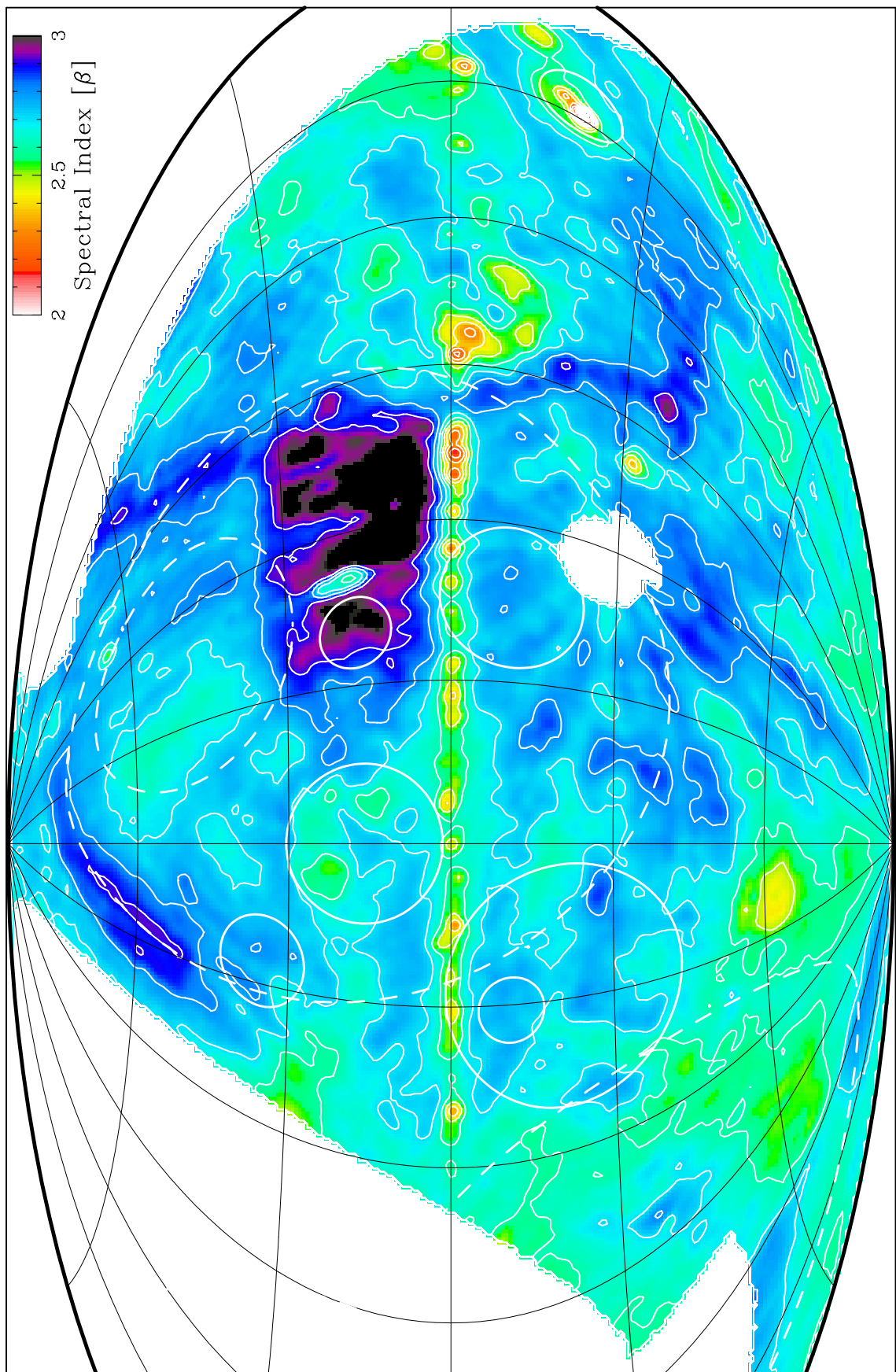
Residual Enhanced 408 MHz Map

Plate C.4



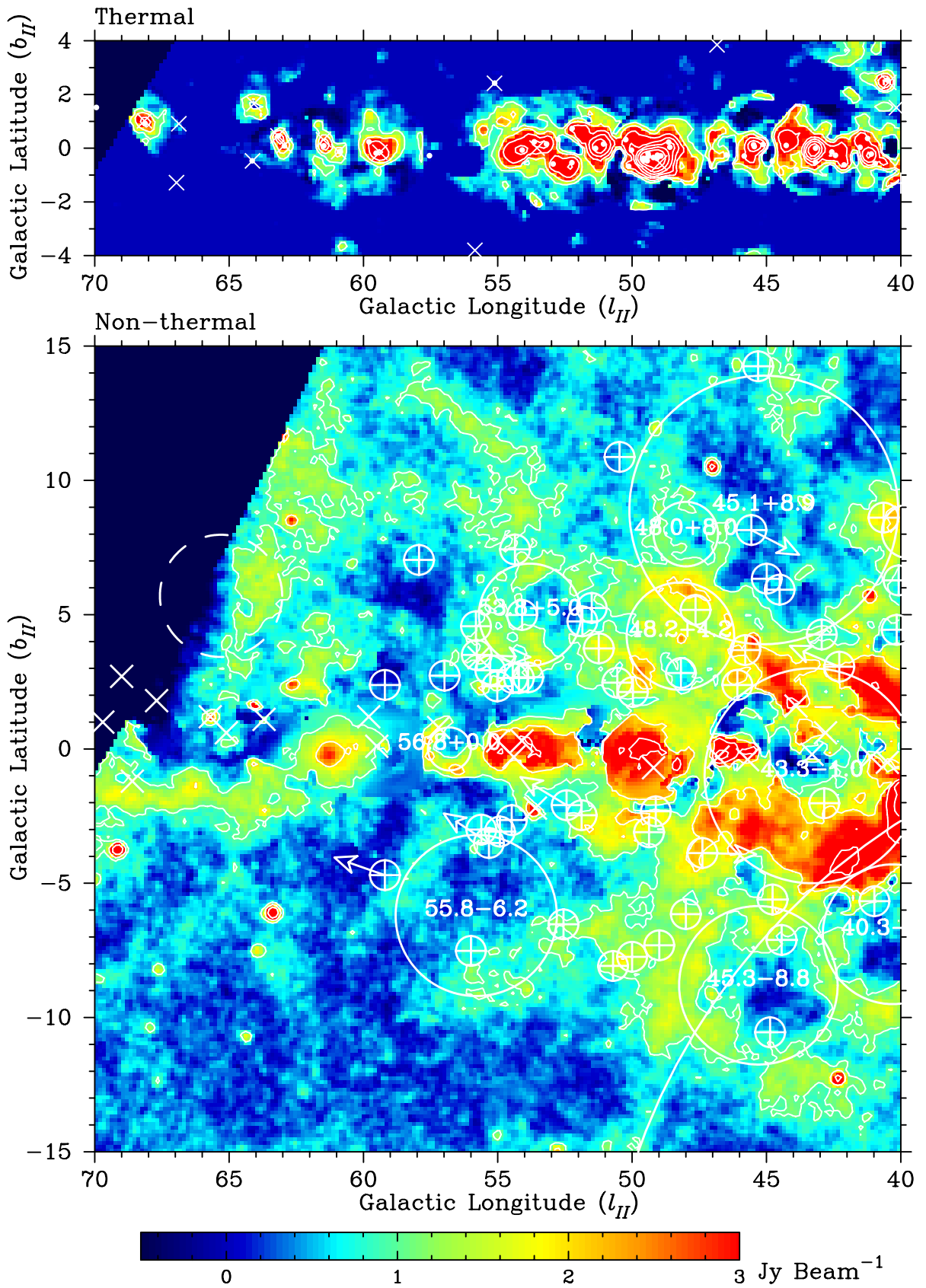
2326/408 MHz Spectral Index Map

Plate C.5



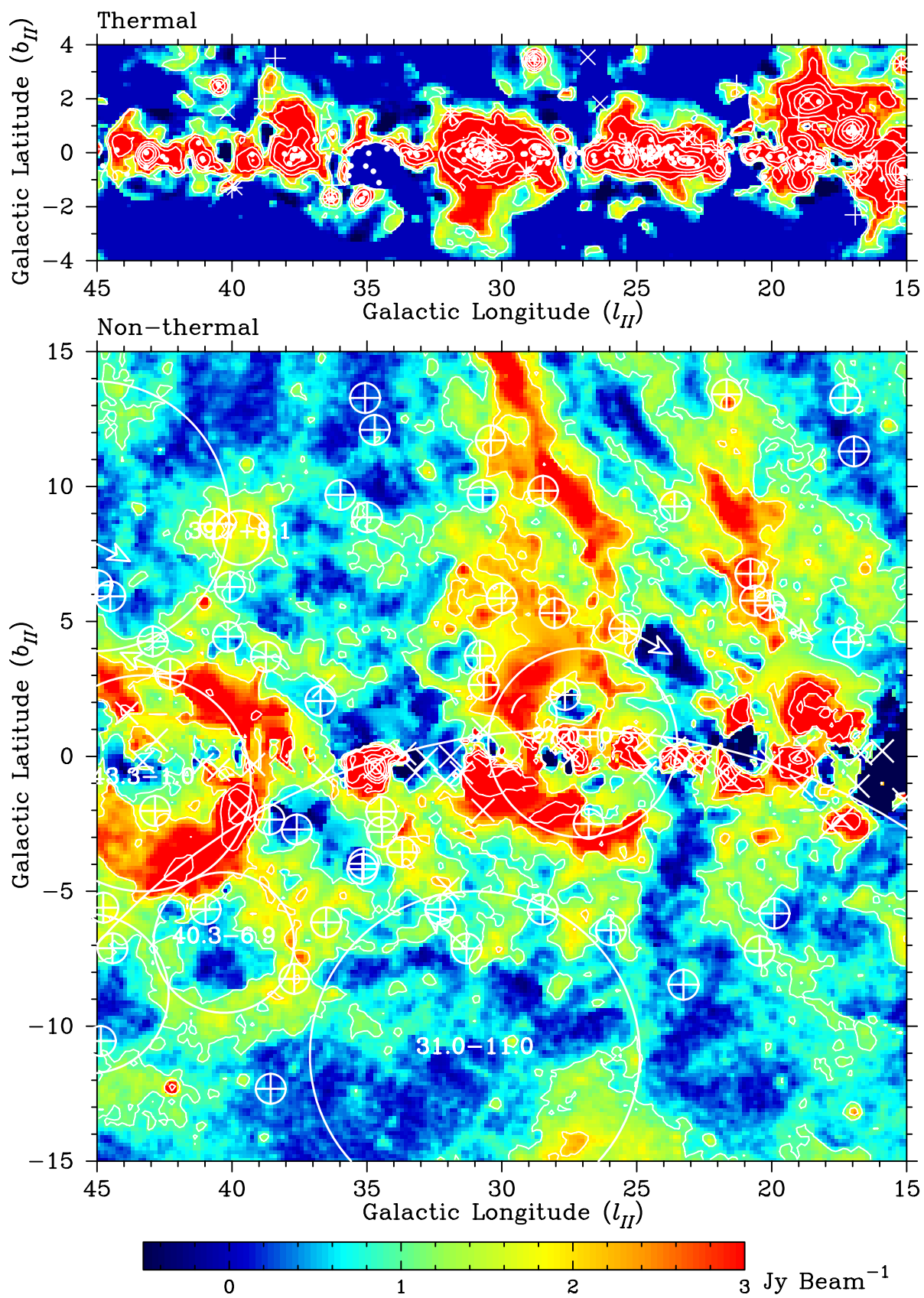
Galactic Plane Map ($70^\circ \geq \ell \geq 40^\circ$)

Plate C.6



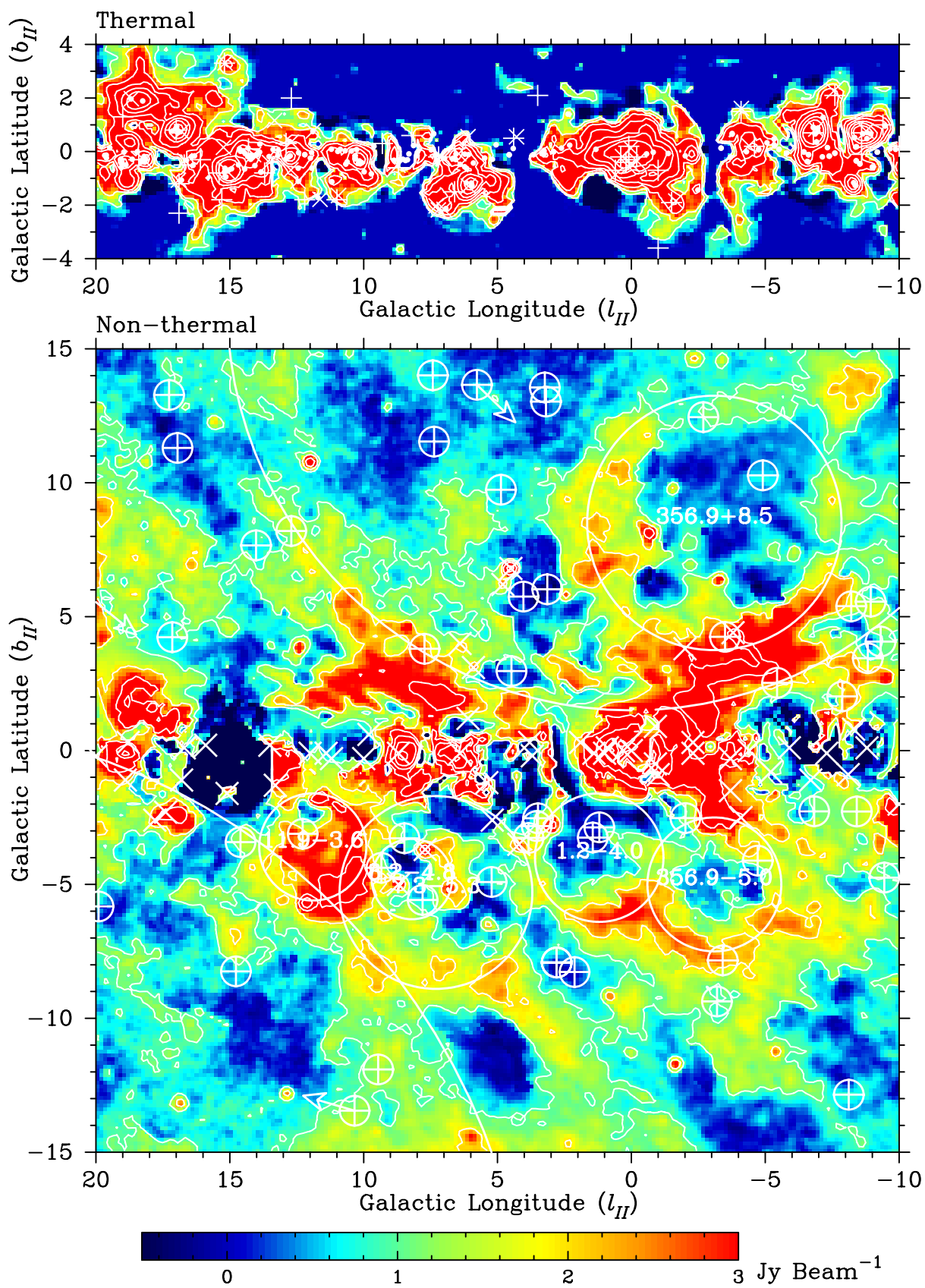
Galactic Plane Map ($45^\circ \geq \ell \geq 15^\circ$)

Plate C.7



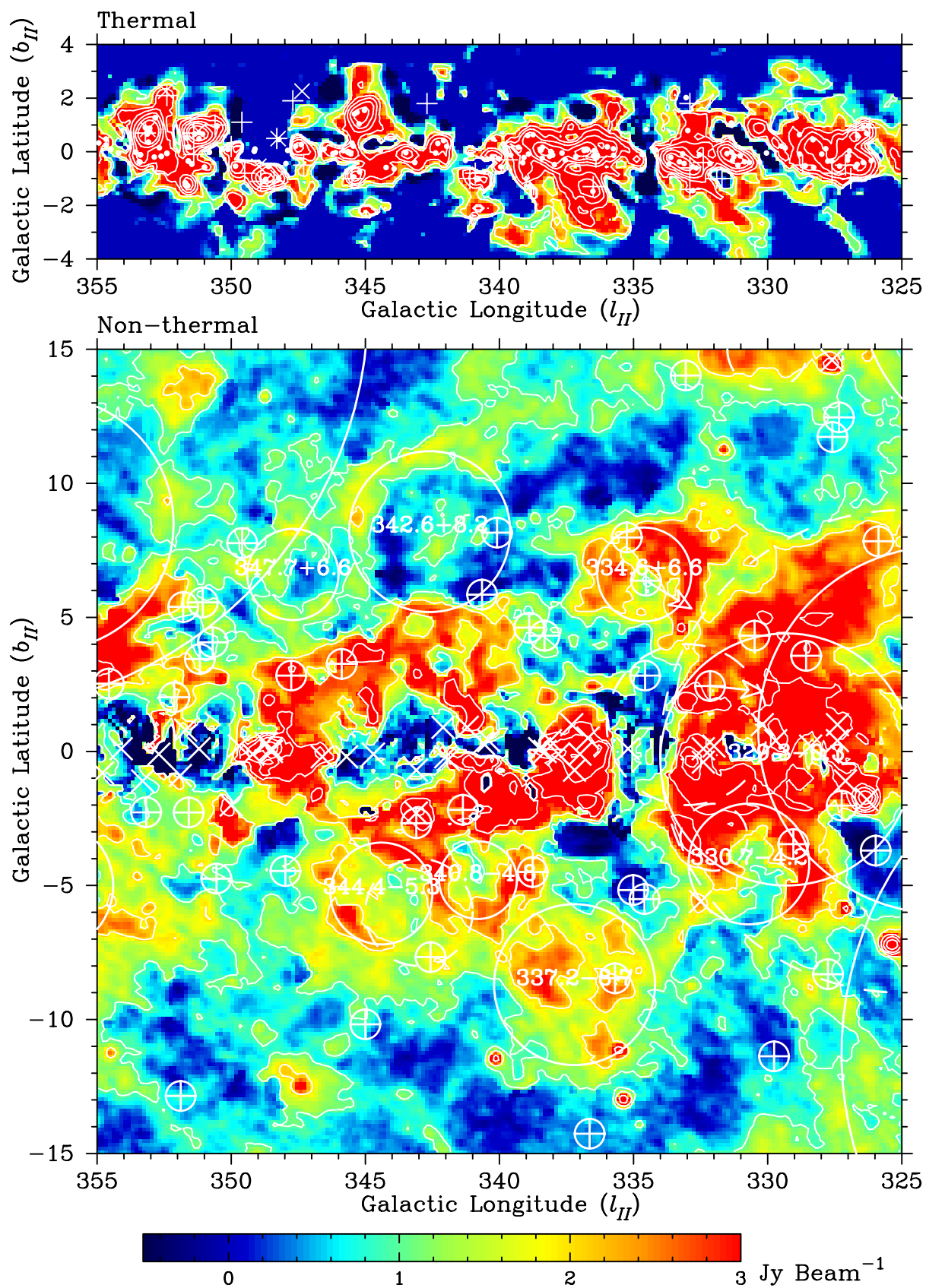
Galactic Plane Map ($20^\circ \geq \ell \geq 350^\circ$)

Plate C.8



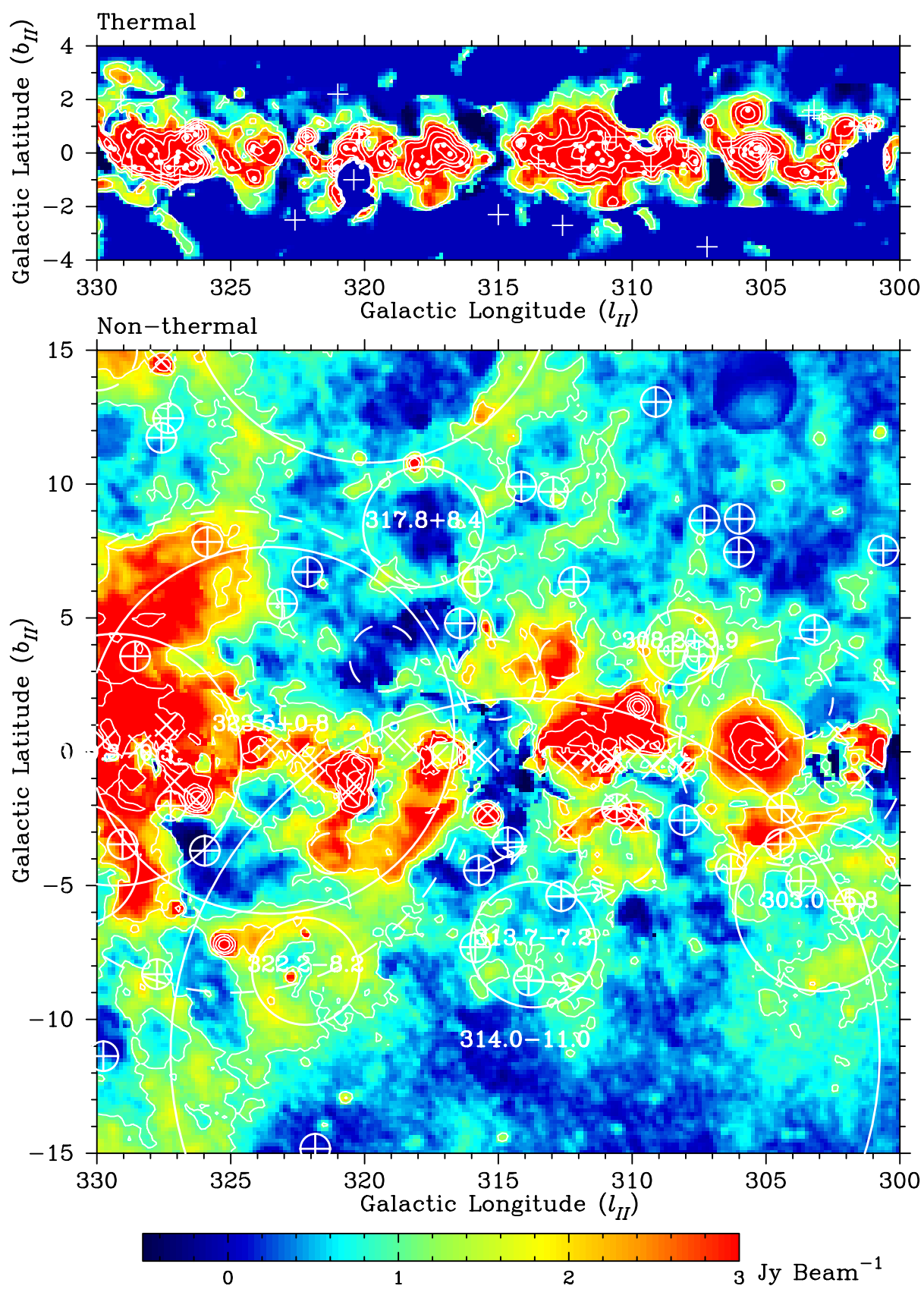
Galactic Plane Map ($355^\circ \geq l \geq 325^\circ$)

Plate C.9



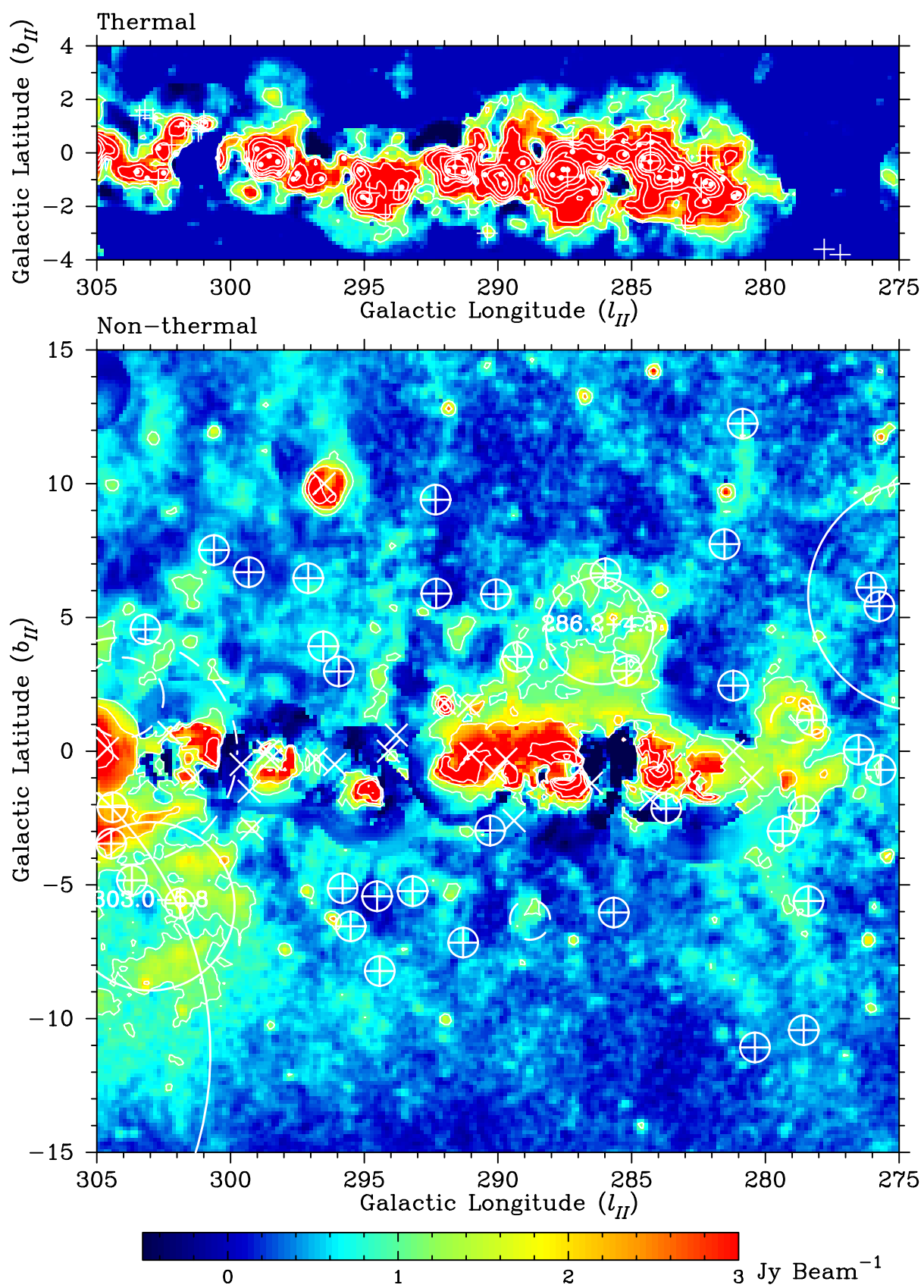
Galactic Plane Map ($330^\circ \geq \ell \geq 300^\circ$)

Plate C.10



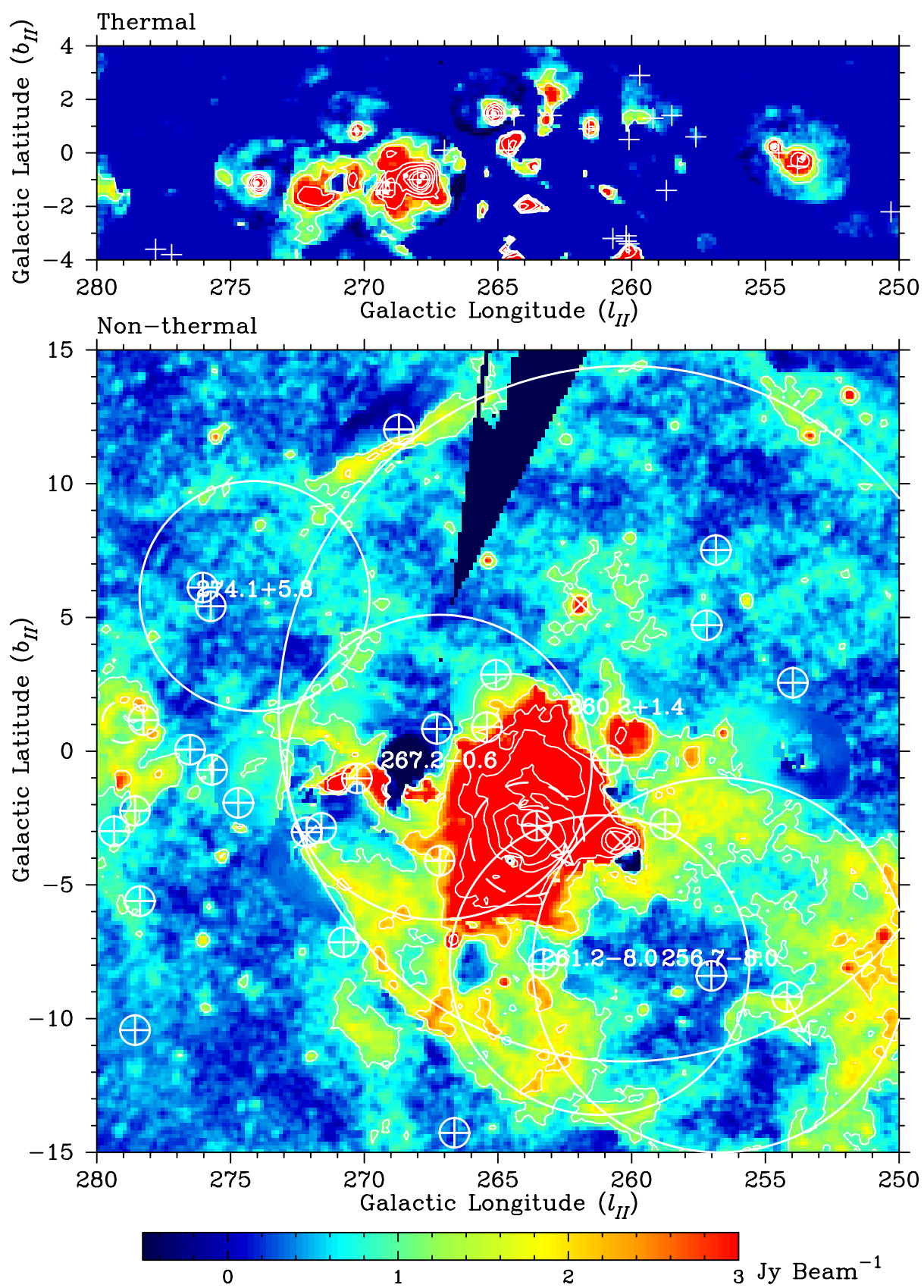
Galactic Plane Map ($305^\circ \geq \ell \geq 275^\circ$)

Plate C.11



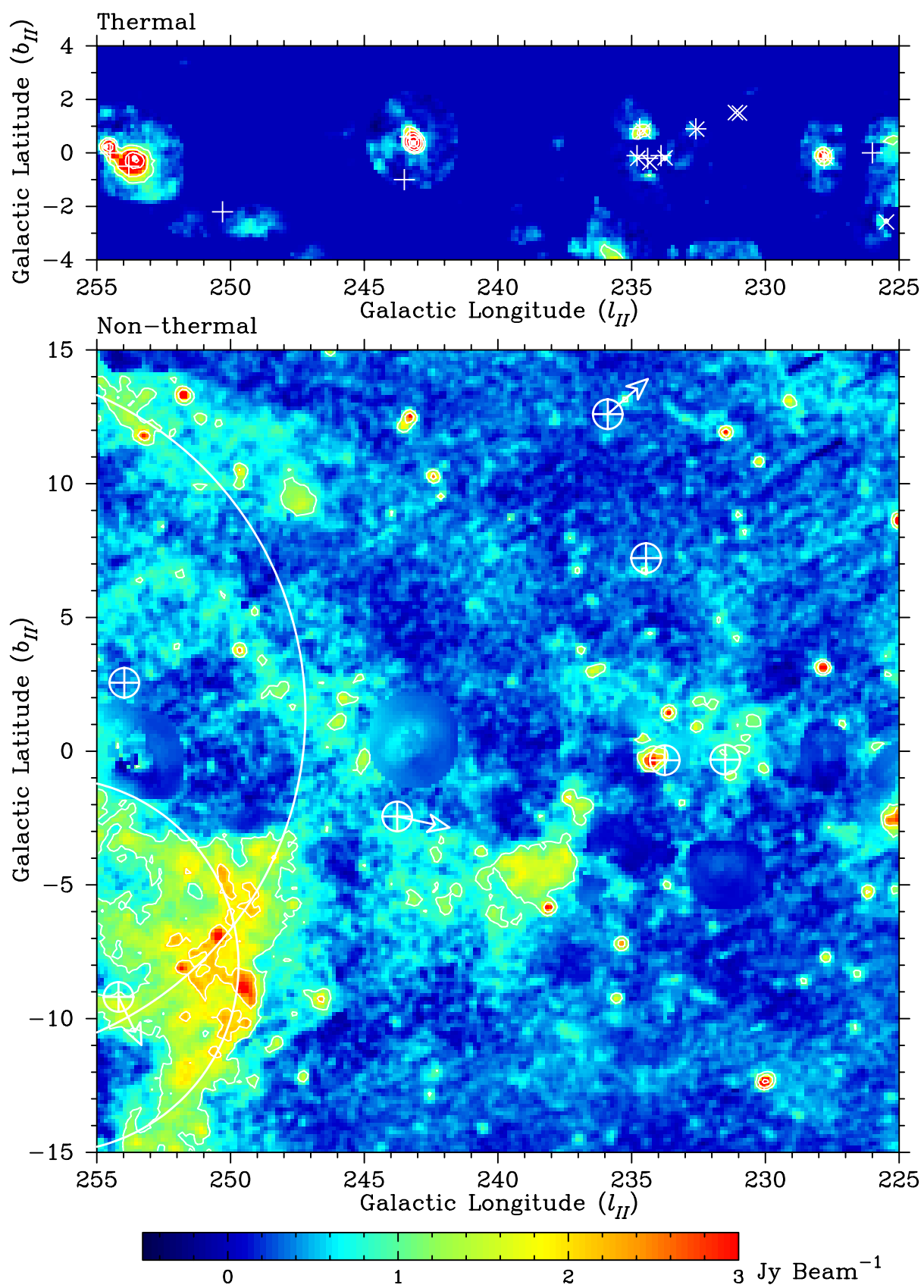
Galactic Plane Map ($280^\circ \geq \ell \geq 250^\circ$)

Plate C.12



Galactic Plane Map ($255^\circ \geq \ell \geq 225^\circ$)

Plate C.13



Galactic Plane Map ($230^\circ \geq \ell \geq 200^\circ$)

Plate C.14

